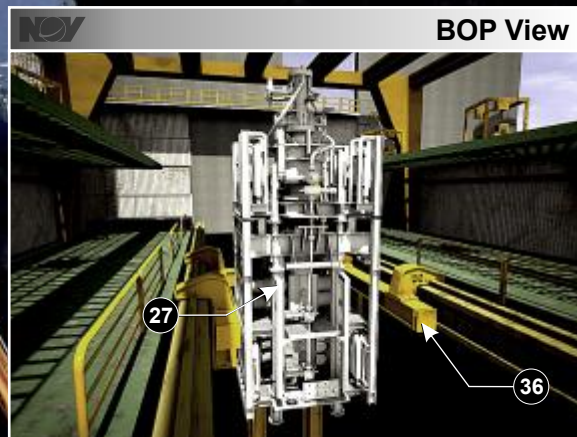
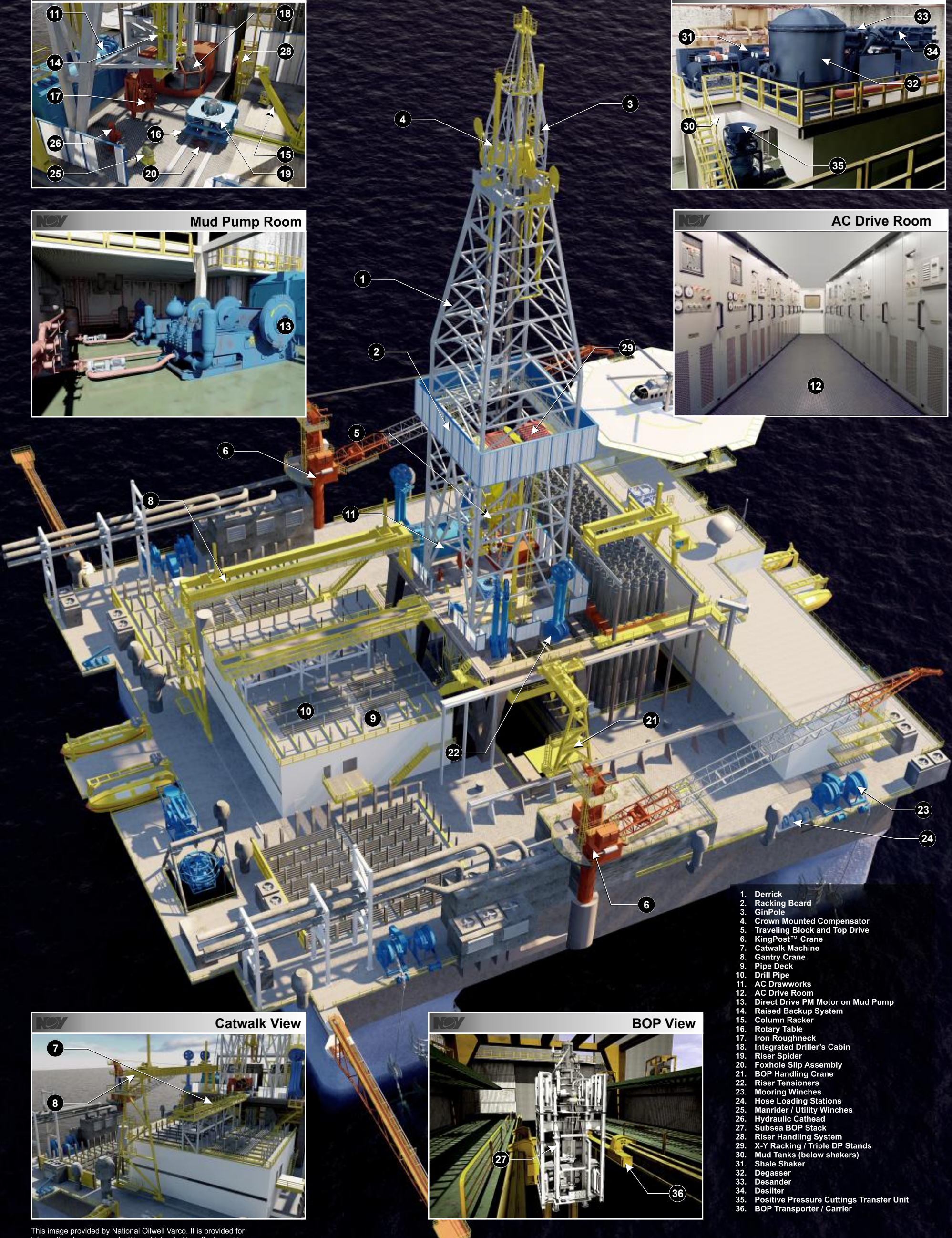
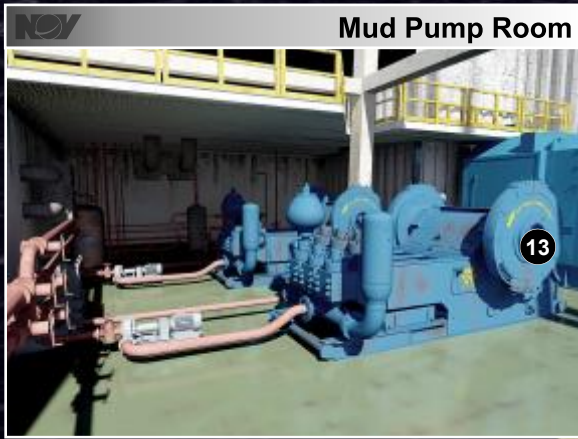
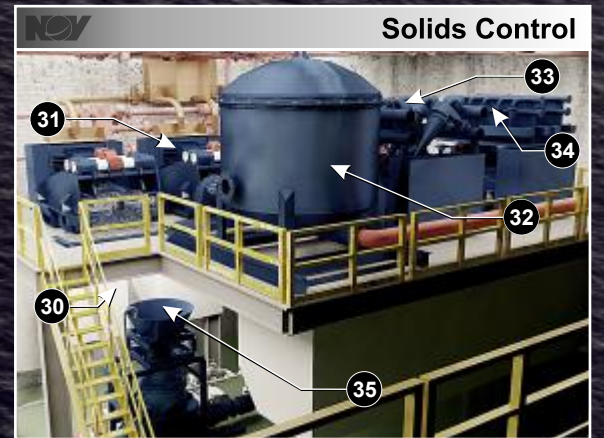
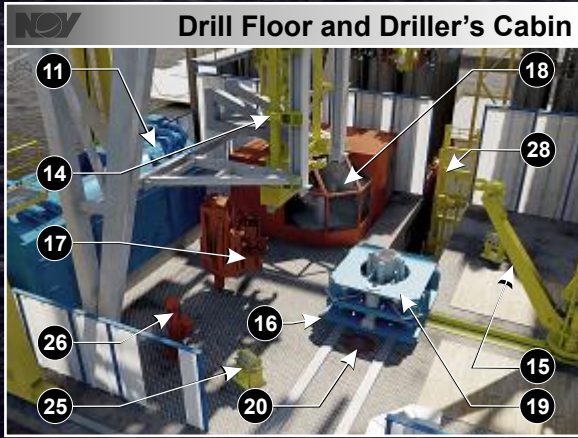


Semi-Submersible Rig



1. Derrick
2. Racking Board
3. Gin Pole
4. Crown Mounted Compensator
5. Travelling Block and Top Drive
6. KingPost™ Crane
7. Catwalk Machine
8. Gantry Crane
9. Pipe Deck
10. Drill Pipe
11. AC Drawworks
12. AC Drive Room
13. Direct Drive PM Motor on Mud Pump
14. Raised Backup System
15. Column Racker
16. Rotary Table
17. Iron Roughneck
18. Integrated Driller's Cabin
19. Riser Spider
20. Foxhole Slip Assembly
21. BOP Handling Crane
22. Riser Tensioners
23. Mooring Winches
24. Hose Loading Stations
25. Manrider / Utility Winches
26. Hydraulic Cathhead
27. Subsea BOP Stack
28. Riser Handling System
29. X-Y Racking / Triple DP Stands
30. Mud Tanks (below shakers)
31. Shale Shaker
32. Degasser
33. Desander
34. Desilter
35. Positive Pressure Cuttings Transfer Unit
36. BOP Transporter / Carrier

This image provided by National Oilwell Varco. It is provided for informational purposes only. It is not intended to reflect or address proper rig-up or safety procedures. There may be additional requirements for certain safety equipment that is not depicted in this poster. National Oilwell Varco assumes no liability for any issues arising from the use of this image.



One Company . . . Unlimited Solutions

www.nov.com
corporatemarketing@nov.com