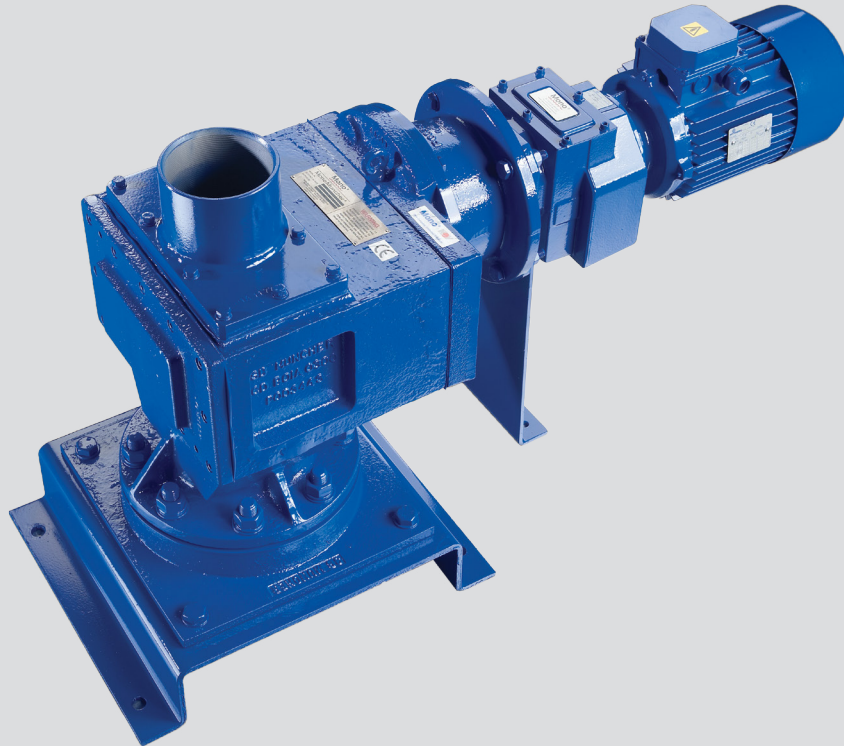


SB Muncher



Time and time again, our Munchers prove to be the most economical solution to a problem many of our customers previously thought difficult to solve.

Features

- Protection of submersible or dry well sewage pumps prone to blockage problems
- Economical solution for small headworks requirements
- High volume fine grinding of sludges improving digestion plant efficiency
- Handling of tankered sludges to a whole host of industrial wet waste grinding duties

The SB Muncher is designed to cope with modern wastewaters and sludges, with all the discarded trappings of today's disposable society that find their way into community and industrial waste collection and treatment systems.

The Principle

The SB Muncher is a Twin Shaft, Slow Speed, High Torque Grinder.

Each shaft is fitted with a series of interleaving cutters and spacers to give real "positive displacement" solids grinding. Once an object becomes trapped in the slowly revolving cutter stacks there is no escape - rags, rope, plastic, drink cans, panti-hose, wood and sundry rubbers are all easily processed through the machine.

- Shafts operate at differential speeds – to promote a tearing action on the fibrous solids
- Low operating speed (typically 50 – 80 rpm) give high torque capability
- Low cutter tip speeds ensure power is not wasted in "water horsepower" and abrasive wear rates are minimised

SB Muncher

The SB Muncher is supplied with a Programmable Logic Controller (PLC) designed to protect the machine against damage from rogue materials and overloads. This can be as an individual PLC unit, a chassis backplate, or a complete control panel.

Features

- Designed to replace traditional high speed, high power centrifugal macerators
- Low cutter tip speeds – low power – low noise level
- 3 Year warranty on raw sewage applications for pipeline units
- Hardened cutters
- Cantilever shaft design – no bottom bearings or seals
- Integral 150mm inlet flange
- Screwed outlet to suit pipework
- One piece cutter/box bearing housing

Applications

Pump Protection

- Facilitates use of small bore rising main
- Effective macerator replacement
- 3 year warranty on raw sewage (SB Pipeline only)
- Full packaged pump stations available
- Single Muncher protects duty/standby pumps
- Above sewage installation
- Allows use of better efficiency pumps

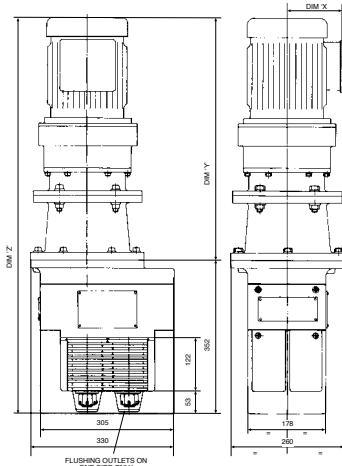
Inlet Works

- Small works automation
- Downstream system protection
- No screening removal costs
- Small footprint
- Minimal civil requirements
- Eliminate screening disposal costs
- Heavy duty capability

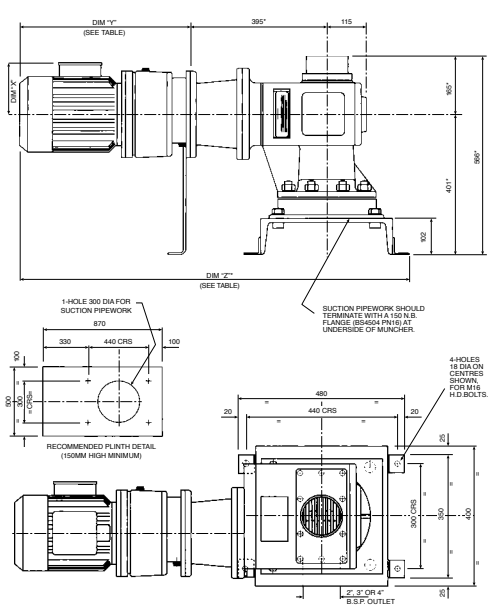
Sludge

- Homogeneous sludge increases process efficiency
- Protects pumping equipment
- Prevents blockages
- Increase digester yield

Channel Unit

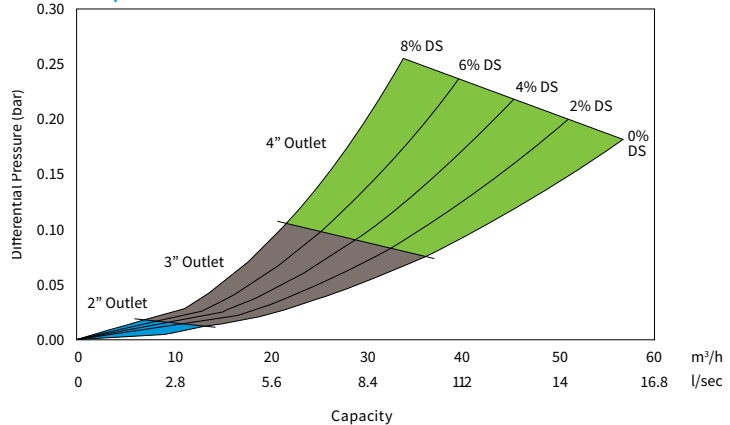


Pipeline Unit with Baseplate



Motor		Dim 'X'	Dim 'Y'	Dim 'Z'	Weight kg
kW	IP				
1.1	55	135	657	1009	155
	67 & 68	241	679	1031	200
1.5	55	140	717	1069	190
	67 & 68	241	717	1069	225
2.2	55	154	739	1091	195
	67 & 68	289	746	1098	260

SB Pipeline Muncher



SB Channel Muncher

