

Selected References Seawater Treatment

Ceiba, Equatorial Guinea



Customer/End User: Petrobras/Triton Energy
Solution: 135,000 BPD skid-based solution consisting of cartridge filters, and SRU.
Delivered: 2001

P50, Brazil



Customer/End User: QGI/Petrobras
Solution: 220,000 BPD Module consisting of coarse filters, cartridge filters, SRU, and deaerator (loose).
Delivered: 2006

MV14, Brazil



Customer/End User: Modec/Petrobras
Solution: 120,000 BPD module consisting of coarse filters, cartridge filters, SRU, and deaerator. Project was delivered in 38 weeks.
Delivered: 2006

P54, Brazil



Customer/End User: Petrobras
Solution: 220,000 BPD skid-based solution consisting of coarse filters, cartridge filters, SRU, deaerator (loose), and injection pumps.
Delivered: 2006

Selected References Seawater Treatment

MV18, Brazil



Customer/End User: Modec/Petrobras
Solution: 138,000 BPD modules consisting of coarse filters, cartridge filters, SRU, and deaerator (loose)
Delivered: 2008

MV20, Brazil



Customer/End User: Modec/Petrobras
Solution: 31,400 BPD module consisting of coarse filters, multimedia and guard filters, deaerator, and SRU.
Delivered: 2009

MV21 Jubilee, Ghana



Customer/End User: Modec/Tullow Oil
Solution: 232,000 BPD modules consisting of coarse filters, multimedia and guard filters, deaerator, and SRU. NOV provided lifecycle services including digitalization with NOV PIM.
Delivered: 2009

MV22 Tupi, Brazil



Customer/End User: Modec/Petrobras
Solution: 100,700 BPD module consisting of coarse filters, multimedia and guard filters, deaerator, and SRU.
Delivered: 2009

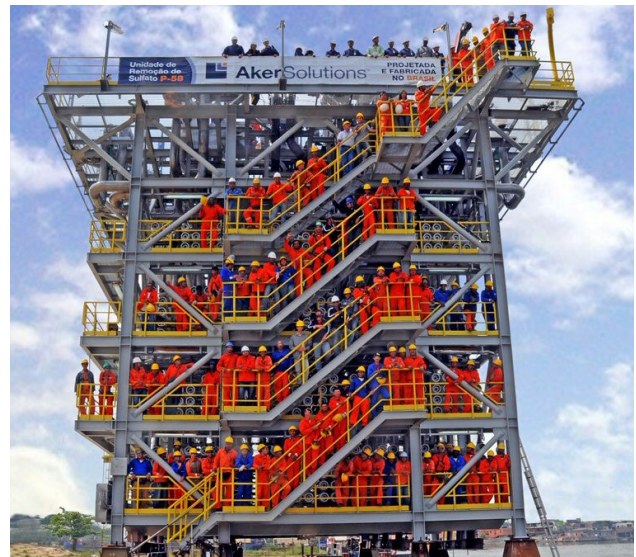
Selected References Seawater Treatment

P62, Brazil



Customer/End User: Petrobras
Solution: 270,000 BPD skid-based solution consisting of coarse filters, multimedia filters, deaerator, and SRU.
Delivered: 2011

P58, Brazil



Customer/End User: Petrobras
Solution: 380,000 BPD skid-based solution consisting of coarse filters, cartridge filters, SRU, and deaerator (loose)
Delivered: 2011

OSX 3, Brazil



Customer/End User: Modec/OSX
Solution: 165,000 BPD module consisting of coarse filters, multimedia and guard filters, deaerator, and SRU.
Delivered: 2012

MV24 Pilot 5, Brazil



Customer/End User: Modec/Petrobras
Solution: 210,000 BPD solution consisting of coarse filters, multimedia and guard filters, deaerator, SRU, and CIP.
Delivered: 2013

Selected References Seawater Treatment

Moho Nord, Congo



Customer/End User: HHI/Total
Solution: 124,730 BPD Module consisting of SRU, CIP, coarse strainers, and deaerator.

Delivered: 2016

Kraken, UK



Customer/End User: BAB/Enquest
Solution: 80,000 BPD skid based coarse filters, UF, SRU, deaerator, and chemical dosing. Operating since 2017 with NOV healthcare support.

Delivered: 2016

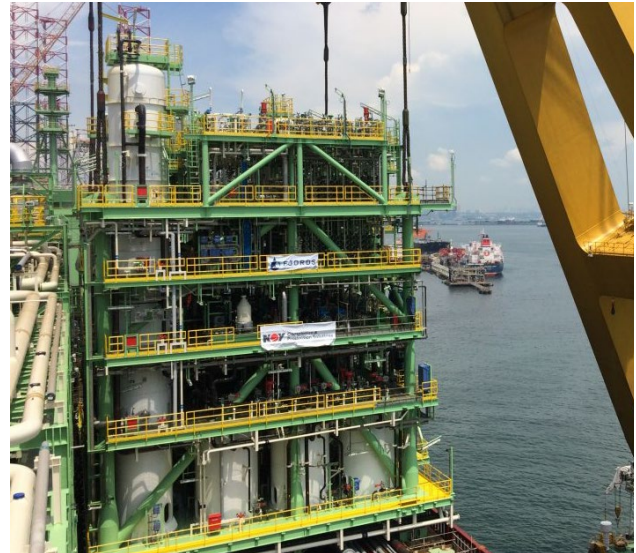
P75, Brazil



Customer/End User: QGI/ Petrobras
Solution: 220,000 BPD module consisting of coarse filters, cartridge filters, SRU, and deaerator (loose).

Delivered: 2018

Catcher, UK



Customer/End User: BWO/Premier Oil
Solution: 500 m³/h SW, 828 m³/h PW. 1758t module (33m x 24m x 24m) consisting of produced water treatment and seawater treatment, combined.

Delivered: 2018

Selected References Seawater Treatment

P77, Brazil



Customer/End User: QGI/Petrobras
Solution: 220,000 BPD Module consisting of coarse filters, cartridge filters, SRU, and deaerator (loose).
Delivered: 2018

Paraiso, Mexico



Customer/End User: Grupo Avanzia/Hockhi
Solution: 300 m³/h SW + 300 m³/h PW. Coarse filters, multimedia filters, deaerator, and SRU.
Delivered: 2021

Buzios, Brazil



Customer/End User: SBM/Petrobras
Solution: 276,800 BPD module consisting of coarse filters, UF, SRU feed pumps, SRU, RO booster pump, SWRO, CIP, chemical dosing skid, deaerator, and SW booster pumps.
Delivered: 2023

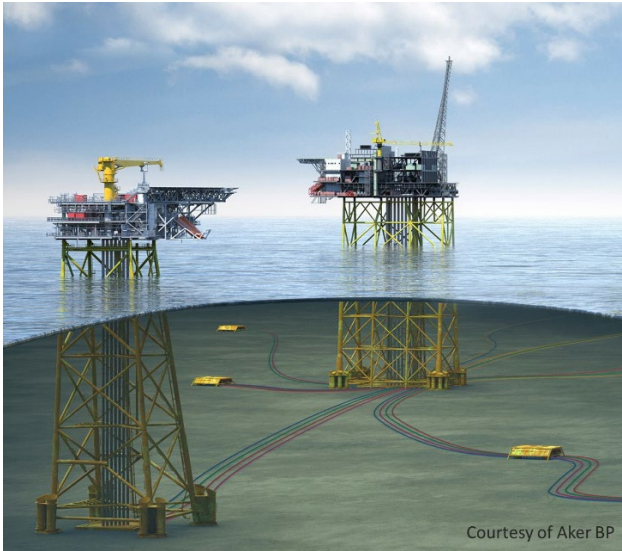
Mero, Brazil



Customer/End User: SBM/Petrobras
Solution: 276,800 BPD module consisting of coarse filters, UF, SRU feed pumps, SRU, RO booster pump, SWRO, CIP, chemical dosing skid, deaerator, and SW booster pumps.
Delivered: 2023

Selected References Seawater Treatment

NOA, Norway



Customer/End User: Aker Solutions/Aker BP

Solution: Selected for FEED with a concept for a 138,500 BPD HVAC enclosed single-lift module consisting of UF, SRU feed pumps, SRU, Membrane Deaeration with PSA nitrogen/vacuum systems, CIP, and chemical dosing skid.

Delivered: FEED 2022/Delivery 2024