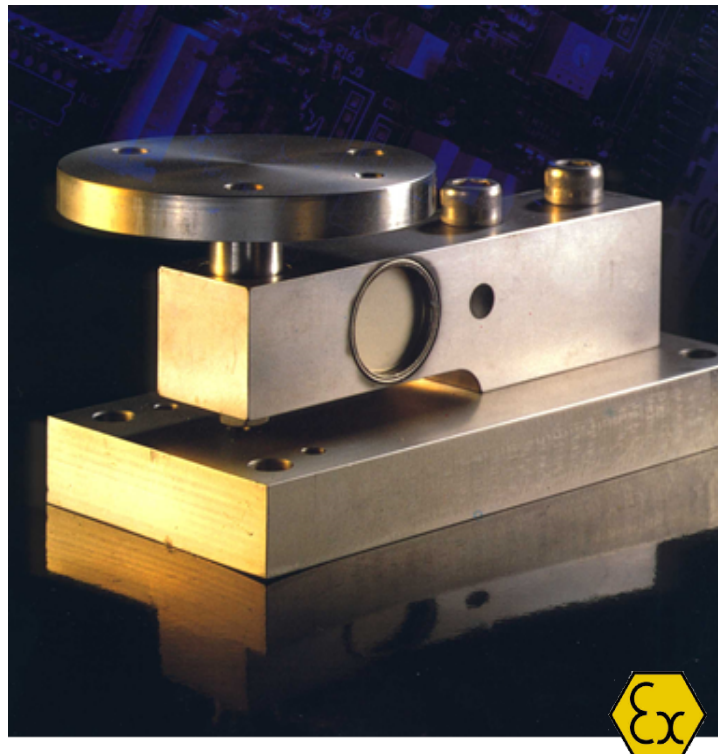




Procon Engineering

(A Division of National Oilwell Varco UK Limited)



Type 7188 Shear Beam Load Cell

Capacities 500kg to 20000kg

Hermetically sealed

Bi-directional loading

Use for compression or tension

Wide range of mounting kits

All stainless steel construction

Low profile

Certified Ex ia IIC T6

Three year warranty

The 7188 is a high performance shear beam load cell specifically designed for process weighing applications.

Fully welded stainless steel construction with a range of optional mounting accessories make it an ideal choice for demanding application in almost any industry.

Type 7188 Shear Beam Load Cell

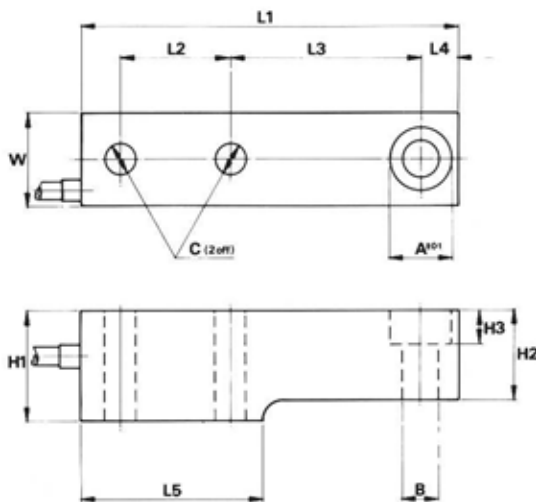
Technical Specification Sheet

SPECIFICATION	
Ranges:	500kg to 20000kg – see Table 1
Non Linearity (terminal):	± 0.03% max
Hysteresis:	0.03%
Repeatability	0.01%
Input Resistance:	400 ohms nominal
Output Resistance:	350 ± 1.5 ohms
Excitation Voltage:	Recommended 10V. Maximum 16V
Sensitivity:	2mV/V ± 0.1%
Zero Load Output:	± 1% max.
Temperature Range:	Compensated: -10 to +60°C. Operating: -30 to + 80°C
Temperature Effect on Zero Load Output:	± 0.002%/°C
Temperature Effect on Span:	± 0.001%/°C
Creep:	0.03% (30 minutes)
Overload Rating:	Safe: 100%. Ultimate: 200%
Safe Side Load:	100%
Cable:	5m of 4 core screened cable on capacities of up to 5000kg 10m of 4 core screened cable on capacities of 10000kg & 20000kg
Material and Finish:	Stainless Steel, 17-4-PH
Protection Class:	Hermetically sealed

TABLE 1 All bolts used must be to ISO grade 12-9

Type	Range kg.	L1	L2	L3	L4	L5	H1	H2	H3	W	Dia. A	Dia. B	Dia. C	Weight kg.	Rec bolt size	Tightening torque Nm (ftlb)	Deflection mm	
6188 – 05	7188 – 05	500	170	45	90	15	80	45	36.5	12	36.5	25.5	14	13	1.8	M12	150(110)	0.1
6188 – 1	7188 – 1	1000																0.18
6188 – 2	7188 – 2	2000																0.38
6188 – 5	7188 – 5	5000	200	55	100	25	95	60	46	16	48	38.2	21	22	3	M20	750(500)	0.6
6188 – 10	7188 – 10	10,000	240	60	127	28	120	70	54	20	58	45.0	25	26	5	M24	1200(800)	0.7
6188 – 20	7188 – 20	20,000	320	90	160	40	160	90	65	25	70	57.2	34	32	11	M30	2500(1600)	1.0

OUTLINE DRAWINGS



7188 WIRING	
Yellow	Excitation Positive
Green	Excitation Negative
Red	Signal Positive
Blue	Signal Negative
Screen	Not connected to loadcell

Procon Engineering's policy is one of continuous product enhancement.

We therefore reserve the right to incorporate technical modifications without prior notification. E&OE.

Issue No: 2018-01

Block 4, Units 2 & 3
Vestry Estate
Sevenoaks, Kent, TN14 5EL

Tel: 01732 781300
Fax: 01732 781311
web site: www.proconeng.com

