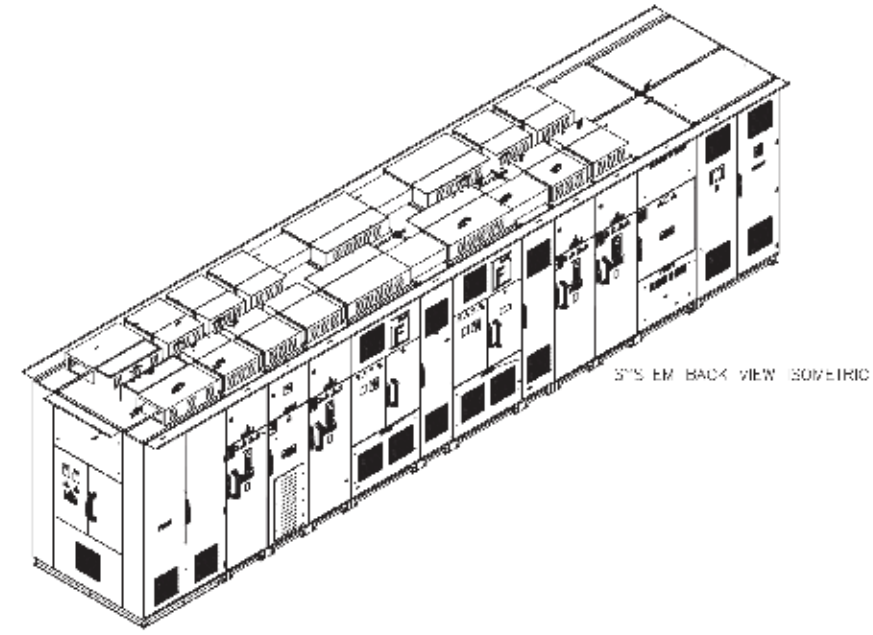
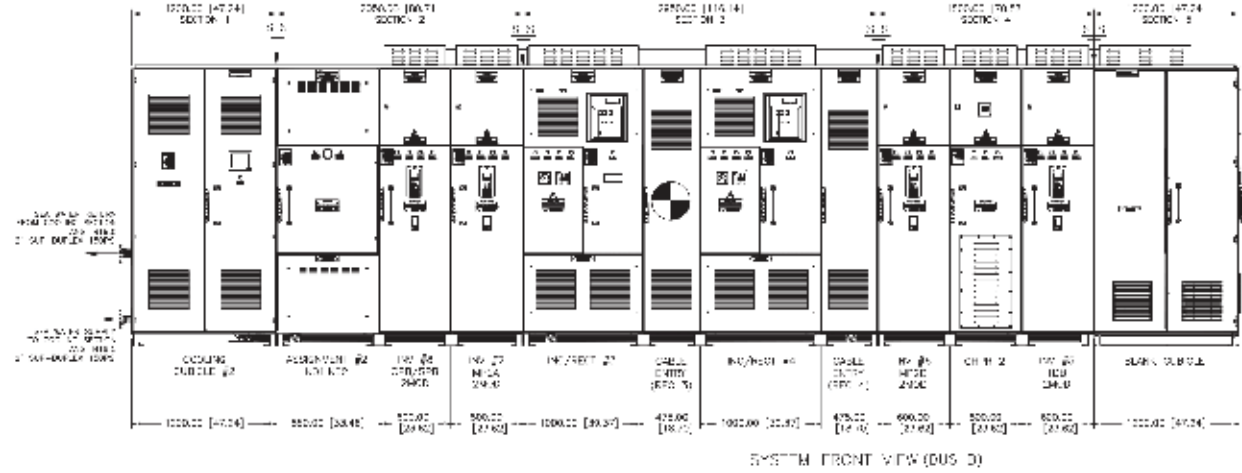


Drill Force - Liquid Cooled



Drill Force LC

The Drill Force LC (Liquid Cooled) systems share all the features with Drill Force AC systems and offer the best reliability and seamless integration with NOV control systems and machinery. NOV proprietary liquid cooling design provides the best cooling capacity and redundancy. High thermal dissipation guarantees the continuous drilling and breaking operations without thermal failures.

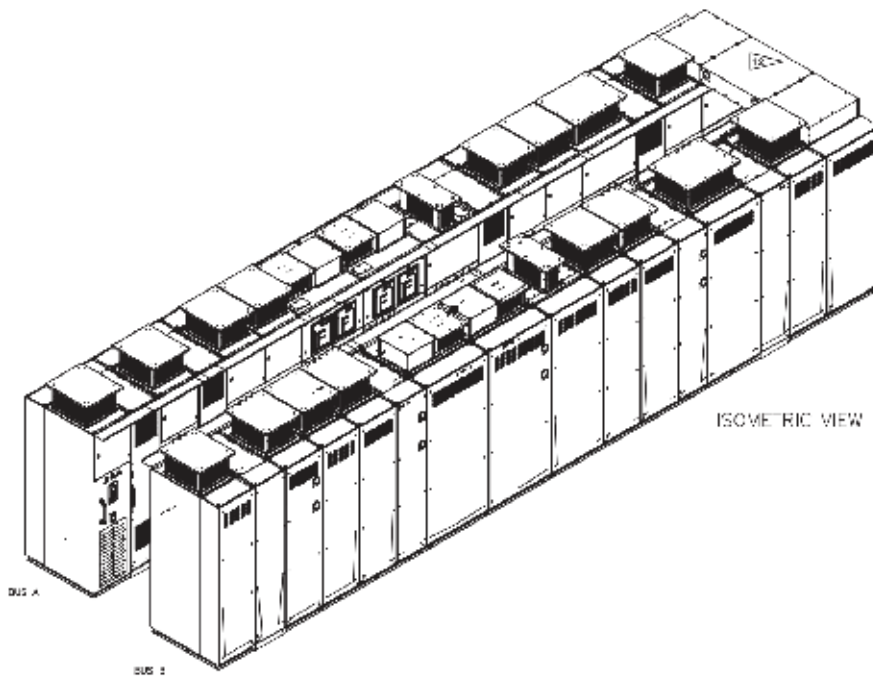
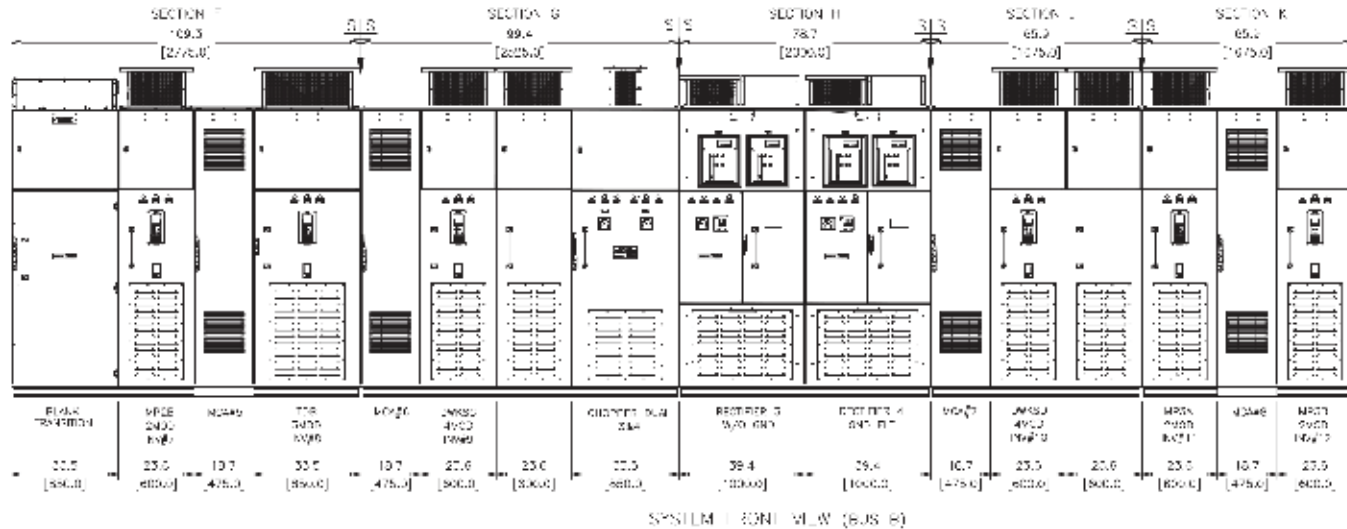
Features

- Onboard pre-charge circuitry
- 6/12/18/24 pulse configurable
- Built-in jacking energy dissipation
- Reserve cooling tank
- Isolation between modules for easy diagnostics
- Induction / PM switchable ramware
- Modular design and configurability
- Excellent serviceability and accessibility
- Proven interface with NOV control and machinery

Drill Force Liquid Cooled Specifications

DC Bus Rating	Rectifier Size	Output Power	Rated Temperature	Ex. Temp. Range	In. Max Press. Range	Compliance
4000 / 8000 A	3200 A	560/1120/1600 kW	40 / 45° C	35 / 75° C	20-60 psi	IEC 61439 - 1
Peak Fault Bracing	Chopper Voltage	Continuous Current	Output Frequency	Ex. Max Flow Range	In. Max Flow Range	Compliance
220 kA	900/1000/1100V selectable	583/1143/1697 A	0-300 Hz	80-110 GPM	100-160 GPM	IEC 61800 -1, -2, -3
System IP Rating	Chopper Continuous Power	Overload Current	Cable Entry Options	Ex. Cooling Water Temp.	Maximum Thermal Dissipation	Compliance
IP42 / IP 20	1200/2400 kW	872/1710/2538 A	Bottom/Top	5-38° C	225 kW / 765 Btu/hr	IEEE - 45 ABS MODU 2012 DNV

Drill Force - Air Cooled



Drill Force AC

The Drill Force VFD AC (Air Cooled) Systems are extremely reliable and integrate seamlessly with NOV control systems and machinery. Compartmentalized design, isolation between modules, diagnostic monitoring, and system protection, offer you the most uptime, reliability, and sociability. Designed, engineered, manufactured, and tested together with NOV controls to optimize the drilling performance and maximize drilling efficiency.

Features

- Onboard pre-charge circuitry
- 6/12/18/24 pulse configurable
- Built-in jacking energy dissipation
- Isolation between modules for easy diagnostics
- Induction / PM switchable ramware
- Modular design and configurability
- Excellent serviceability and accessibility
- Proven interface with NOV control and machinery

Drill Force Air Cooled Specifications

DC Bus Rating	Rectifier Size	Output Power	Rated Temperature	Compliance
4000 / 8000 A	2500 A	450/900/1400 kW	40 / 45° C	IEC 61439 - 1
Peak Fault Bracing	Chopper Voltage	Continuous Current	Output Frequency	Compliance
220 kA	900/1000/1100V selectable	486/953/1414 A	0-300 Hz	IEC 61800 -1, -2, -3
System IP Rating	Chopper Continuous Power	Overload Current	Cable Entry Options	Compliance
IP42 / IP 20	1200/2400 kW	727/1425/2116 A	Bottom/Top	IEEE - 45 ABS MODU 2012 DNV