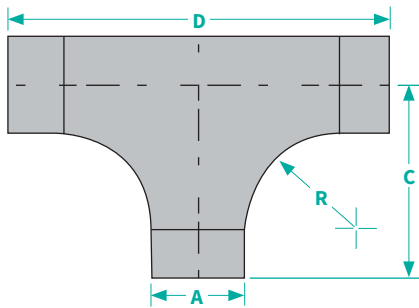


Standpipe and Manifold Fittings

Tuboscope Standpipe and Manifold high pressure fittings are manufactured and machined from ASTM A487 Grade 4 Class D (75-100). This high carbon steel has excellent weld ability and is able to withstand extreme high pressures associated with modern drilling methods

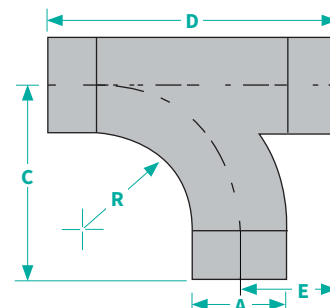
Fittings are available in a variety of designs with welded types or threaded connections, and manufactured for 5,000 PSI, 7,500 PSI and 10,000 PSI working pressure. All fittings are compatible with all types of pump manifolds and mud line systems.

2" thru 4" fittings are offered in 5000 PSI and 10,000 PSI working pressure. 5" and 6" fittings are offered in 5,000 PSI and 7,500 PSI working pressure. All sizes and configurations are available for sour gas service.



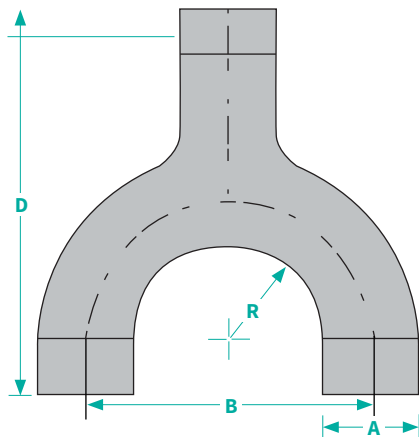
Long Sweep Full Flow Tee

Size	Dimensional Data				Threaded Connection	Welded Connection †
	R	A	D	C	Part No.	Part No.
2"	4 3/16	3 3/4	16	8	313-124-2220	313-424-2220-XXX
3"	5 1/4	5 3/4	22	11	313-124-3330	313-424-3330-XXX
4"	5 1/4	5 3/4	22	11	313-124-4440	313-424-4440-XXX
4" x 3" x 4"	5 1/4	5 3/4	22	11	313-124-4340	313-424-4340-XXX
4" x 4" x 3"	5 1/4	5 3/4	22	11	313-124-4430	313-424-4430-XXX
5"	5 1/4	5 3/4	24	11	313-124-5550	313-424-5550-XXX
6"	5 1/4	5 3/4	24	12	N/A	313-424-6660-XXX



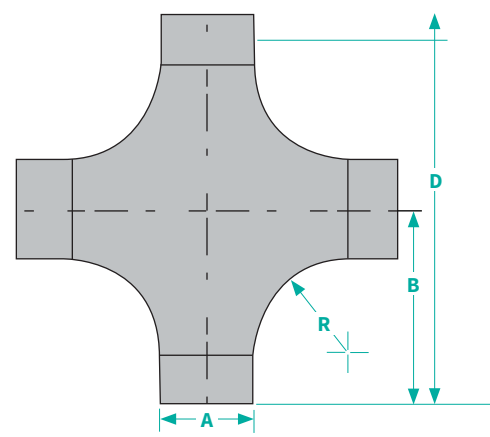
Long Sweep Tee

Size	Dimensional Data					Threaded Connection	Welded Connection †
	R	A	C	D	E	Part No.	Part No.
2"	4 3/16	3 3/4	8	11	N/A	313-120-2220	413-420-2220-XXX
3"	5 1/4	5 3/4	11	16	5	313-120-3330	313-420-3330-XXX
4"	5 1/4	5 3/4	11	16	5	313-120-4440	313-420-4440-XXX
4" x 3" x 4"	5 1/4	5 3/4	11	16	5	313-120-4340	313-420-4340-XXX
4" x 4" x 3"	5 1/4	5 3/4	11	16	5	313-120-4430	313-420-4430-XXX
5"	5 3/8	7 3/4	12	19	7	313-120-5550	313-420-5550-XXX
5" x 4" x 5"	5 3/8	7 3/4	12	19	7	313-120-5450	313-420-5450-XXX
6"	5 3/8	7 3/4	12	19	7	N/A	313-420-6660-XXX



Long Sweep "Y"

Size	Dimensional Data				Threaded Connection	Welded Connection †
	R	A	D	B	Part No.	Part No.
3"	4 1/4	3 3/4	19 1/2	14	313-150-3330	313-450-3330-XXX
4"	5 1/4	5 3/4	19 1/2	14	313-150-4440	313-450-4440-XXX
5"	5 1/4	5 3/4	19 1/2	14	N/A	313-450-5550-XXX

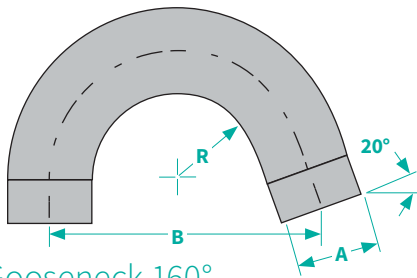


Long Sweep Full Flow Cross

Size	Dimensional Data				Threaded Connection	Welded Connection †
	R	A	B	D	Part No.	Part No.
2"	4 3/16	3 3/4	8	16	313-144-2222	413-444-2222-XXX
3"	5 1/4	5 3/4	11	22	313-144-3333	313-444-3333-XXX
4"	5 1/4	5 3/4	11	22	313-144-4444	313-444-4444-XXX
5"	5 3/8	7 3/4	12	24	313-144-5555	313-444-5555-XXX
6"	5 3/8	7 3/4	12	24	313-144-6666	313-444-6666-XXX

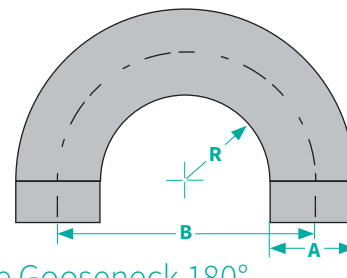
† Welded connection shown is BUTTWELD type. The X represents the schedule of pipe. I.E. schedule XXH=5, schedule 160=4. **IMPORTANT** When ordering BUTTWELD fittings, please specify size and schedule of pipe.

Standpipe and Manifold Fittings



Standpipe Gooseneck 160°

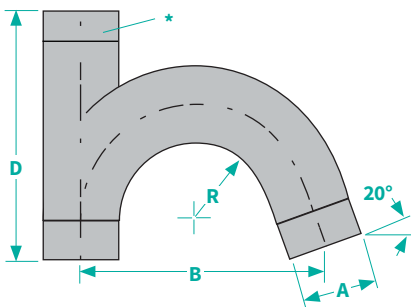
Size	Dimensional Data			Threaded Connection	Welded Connection †
	R	A	B	Part No.	Part No.
2"	4 9/16	3 1/4	12 5/16	313-132-2200	313-432-2200-XXX
3"	4 9/16	5 3/4	14	313-132-3300	313-432-3300-XXX
4"	4 23/32	5 3/4	14	313-132-4400	313-432-4400-XXX
4" x 3"	3 7/8	7 3/4	16	313-132-4300	313-432-4300-XXX
5"	3 7/8	7 3/4	16	313-132-5500	313-432-5500-XXX
6"	3 7/8	7 3/4	16	N/A	313-432-6600-XXX



Standpipe Gooseneck 180°

Size	Dimensional Data			Threaded Connection
	R	A	B	Part No.
4"	4 1/4	5 3/4	14	313-133-4400

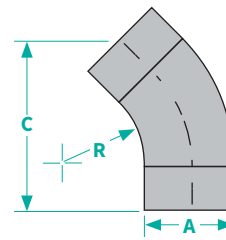
Available only in 4" threaded



Standpipe Gooseneck — 160° with Top Outlet

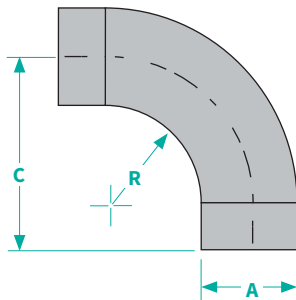
Size	Dimensional Data				Threaded Connection	Welded Connection †
	R	A	B	D	Part No.	Part No.
3"	3 23/32	5 3/4	14	14	313-132-3330	313-432-3330-XXX
4"	3 23/32	5 3/4	14	14	313-132-4440	313-432-4440-XXX
5" x 4" x 5"	3 7/8	5 3/4	16	14	313-132-5450	313-450-5550-XXX
5"	3 7/8	7 3/4	16	19	313-132-5550	313-432-5450-XXX
6"	3 7/8	7 3/4	16	19	N/A	313-432-6660-XXX

* Top outlet can be ordered in any size



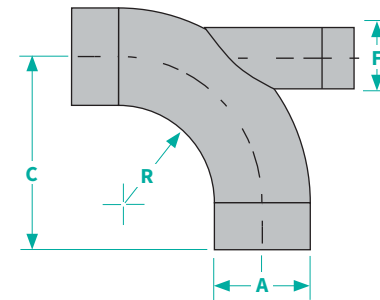
Long Sweep ELL — Plain 45°

Size	Dimensional Data			Threaded Connection	Welded Connection †
	R	A	C	Part No.	Part No.
2"	4 9/16	3 1/4	5 5/16	313-111-2200	313-411-2200-XXX
3"	5 1/4	5 3/4	10 7/8	313-111-3300	313-411-3300-XXX
4"	5 1/4	5 3/4	10 7/8	313-111-4400	313-411-4400-XXX
5"	5 3/8	7 3/4	11 1/2	313-111-5500	313-411-5500-XXX
6"	5 3/8	7 3/4	11 1/2	N/A	313-411-6600-XXX



Long Sweep ELL — Plain 90°

Size	Dimensional Data			Threaded Connection	Welded Connection †
	R	A	C	Part No.	Part No.
2"	4 9/16	3 1/4	8"	313-110-2200	313-410-2200-XX
3"	5 1/4	5 3/4	14"	313-110-3300	313-410-3300-XX
4"	5 1/4	5 3/4	14"	313-110-4400	313-410-4400-XX
5"	5 3/8	7 3/4	16"	313-110-5500	313-410-5500-XX
6"	5 3/8	7 3/4	16"	N/A	313-410-6600-XX



Long Sweep ELL with 2" Outlet

Size	Dimensional Data				Threaded Connection	Welded Connection †
	R	A	F	C	Part No.	Part No.
3"	5 1/4	5 3/4	3 1/4	11	313-110-3320	313-110-3320-XXX
4"	5 1/4	5 3/4	3 1/4	11	313-110-4420	313-110-4420-XXX
3" x 4"	5 1/4	5 3/4	3 1/4	11	313-110-3420	313-110-3420-XXX
4" x 3"	5 3/8	7 3/4	3 1/4	11	313-110-4320	313-110-4320-XXX
5"	5 3/8	7 3/4	3 1/4	12	313-110-5520	313-110-5520-XXX
6"	5 3/8	7 3/4	3 1/4	12	N/A	313-110-6620-XXX

† Welded connection shown is BUTTWELD type. The X represents the schedule of pipe. I.E. schedule XXH=5, schedule 160=4. **IMPORTANT** When ordering BUTTWELD fittings, please specify size and schedule of pipe.