



WellChek™ II & WellTrak

Wellsite Tubing Inspection with Real Time Evaluation of Tubing Conditions

WellChek™ II and **WellTrak** offer the latest technology in real time tubing inspection, data management and evaluation. These services combined provide valuable tools for today's well managers.

WellChek II is a self-contained, mobile inspection system with a remote monitoring vehicle that runs in conjunction with normal tubing pulling operations.

This advanced system offers an accurate evaluation of each tube with proven inspection technology, utilizing Sonoscope™ EMI for detection of internal and external defects, Isolog™ (*gamma source*) for accurate wall loss and eddy current for split detection.

Each tube's assessment is available as soon as the tube clears the inspection head. In addition to a profile of the string as a whole, pipe is classified by standard API or customer specifications.

Rejected tubes are laid down and reusable tubing is stood back in the derrick.

Benefits:

- Professionally trained crew for efficient and safe operations
- Quick size changeover and recalibration process
- Records exact defect and joint location in the well
- Real time usable information
- On-site inspection eliminates need for trucking to inspection facilities
- Immediate re-use of good tubing

Defect Detection

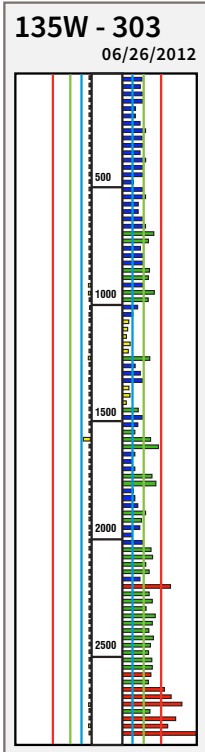
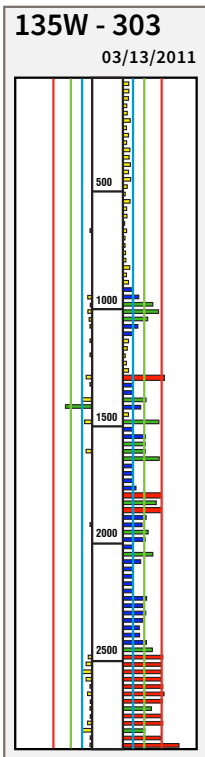
- Corrosion pitting
- Rod wear
- Wall loss
- Cracks
- Erosion
- Splits
- Cuts
- Holes
- 3-Dimensional Transverse Defects

Tubing Sizes

- 2 3/8"
- 2 7/8"
- 3 1/2"



WellChek™ II and WellTrak

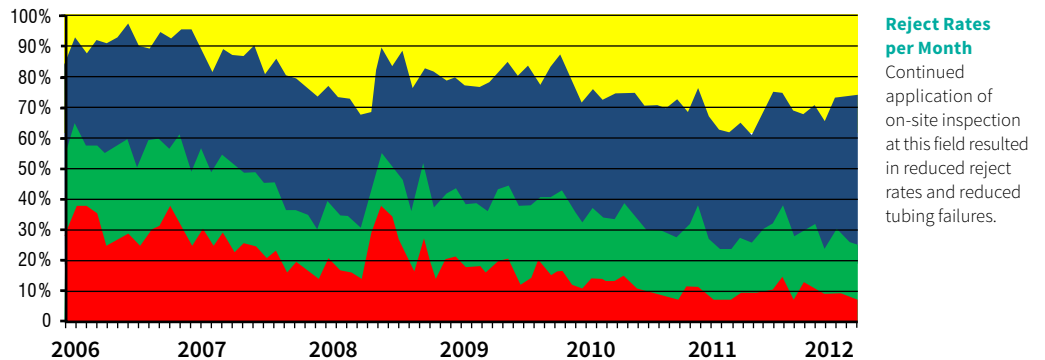
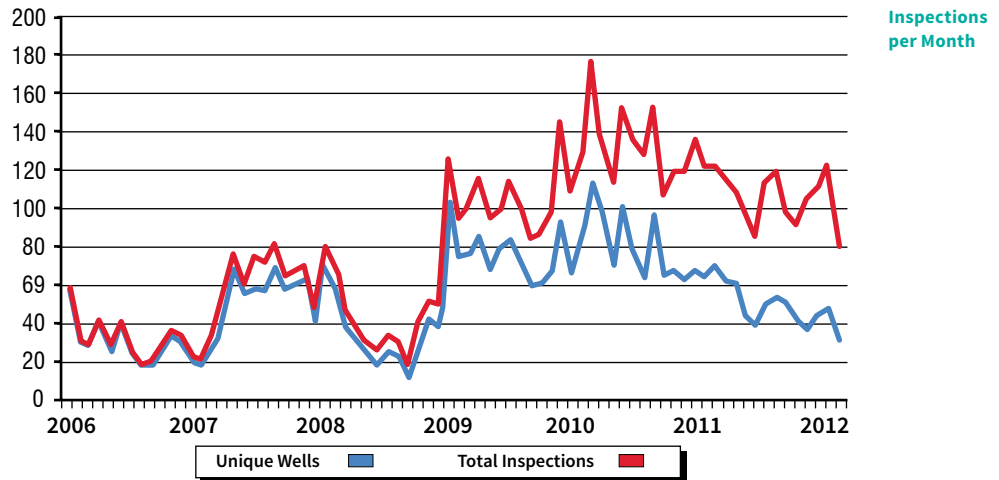


Sample Well

Well profiles show the rate of corrosion (left bars) and wall loss (right bars) by joint at precise depths.

WellTrak Tubing Data Management and Evaluation System provides production engineers, well managers, rig supervisors and others in tubing management programs access to WellChek inspection reports. The reports provide critical data at precise depths where string wear, corrosion, or failures have occurred.

Tubing Management decisions based on WellTrak's online historical database of well / field conditions can greatly assist in string design, treatments or mitigation techniques before the well is put back on production. This valuable information helps extend the run life of wells, measure the effectiveness of changes, and reduce overall tubing failures.



Reject Rates per Month
Continued application of on-site inspection at this field resulted in reduced reject rates and reduced tubing failures.

Benefits:

- Individual full inspection history
- Online access to well records
- Identify patterns or correlations among historical inspections
- Quick rod guide assessment can be established in conjunction with rod design programs
- Generalized statistics for inspections performed

The exclusive Tuboscope WellChek inspection coupled with WellTrak's data management system maximizes the potential of your tubing string, preventing future problems while reducing operating costs.