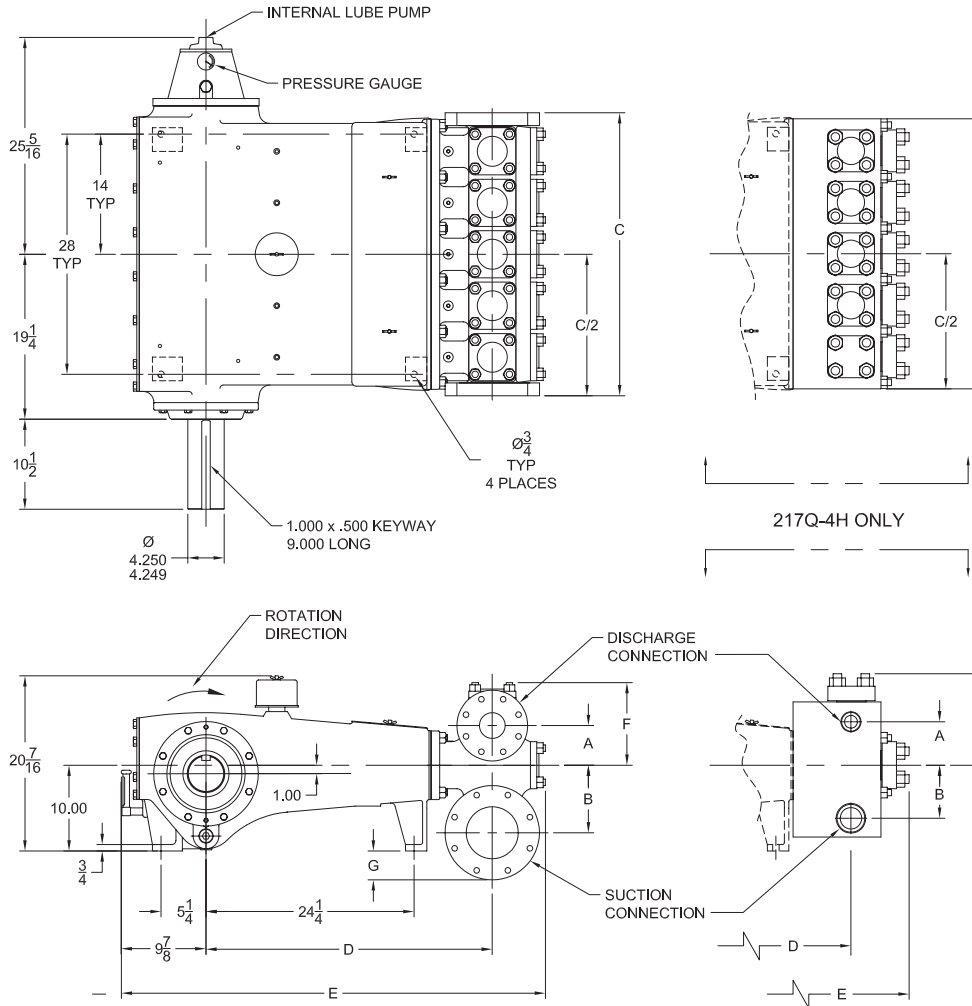


# 217Q-4 Quintuplex Plunger Pump

## Specifications



### Pump Size:

maximum plunger size x stroke length, in.(mm):  
3.375 x 4.500 (85.725 x 114.3)

**Rated BHP (kW) at 390 RPM:** 217 (162)

**Rated plunger load, pounds (kg):** 8800(3992)

**Maximum discharge pressure: psi (kPa)**

"L" model: 1440 (9929)

"M" model: 3600 (24821)

"H" model: 6000 (41369)

### Crankshaft extension:

Diameter, in.(mm): 4.250 (107.95)

Length, in.(mm): 10.50 (266.7)

Keyway width x depth, in.(mm):

1 x 1/2 (25.4 x 38.1)

Maximum recommended sheave diameter,

in.(mm): 53 (1346.2)

For larger sizes: **Contact Factory**

### Pinion shaft extension,

if gear reducer is supplied, in.(mm)

For belt or chain drive: **Contact Factory**

For direct drive: Diameter: 2.500 (63.5)

Length: 5.000 (127.0)

Keyway (width x length):

5/8 x 5/16 (15.88 x 7.94)

### Accessory gear reduction unit:

2.06:1, 2.26:1, 3.60:1, 4.25:1, 4.65:1,

4.88:1, 5.13:1, 5.40:1, 5.69:1

### Oil Capacity, gallons (L)

Crankcase: 7 (26.5)

Gear Reducer - varies with ratio:

2.00 to 2.25 (7.57 to 8.52)

### Weight, pump only on

wood shipping skids, pounds (kg): 2948 (1337)

### Standard Materials for Fluid Ends:

"L" & "M" models

Cast Nickel-Aluminum-Bronze

Cast Duplex Stainless Steel

Forged/Plate Carbon Steel

"H" model

Forged/Plate Carbon Steel

Forged 15-5 Stainless Steel

Forged Nickel-Aluminum-Bronze

| Pump Model | Flange Connections         |                          | Dimensions (Inches) |        |        |        |          |        |        |
|------------|----------------------------|--------------------------|---------------------|--------|--------|--------|----------|--------|--------|
|            | Discharge Connection Sizes | Suction Connection Sizes | A                   | B      | C      | D      | E        | F      | G      |
| 217Q-4L    | 3 (76.2)-ANSI 600 FF       | 6 (152.4)-ANSI 150 FF    | 4 5/8               | 7 7/8  | 33     | 33 3/8 | 49 7/16  | 9 5/8  | 3 3/8  |
| 217Q-4M    | 2 (50.8)-ANSI 1500 FF      | 4 (101.6)-ANSI 300 FF    | 5 1/16              | 5 7/8  | 33     | 33     | 48 11/16 | 9 1/2  | 7/8    |
| 217Q-4H    | 2 (50.8)-11 1/2 NPT        | 3 (76.2)-8 NPT           | 5 1/16              | 6 3/16 | 31 1/2 | 33     | 49 1/4   | 10 3/4 | -1 5/8 |

# 217Q-4 Quintuplex Plunger Pump

## Performance Data

| PUMP                 | English Units             |                      |             |             |                 | 100 * RPM |      | 150 RPM |       | 200 RPM |       | 250 RPM |       | 300 RPM |       | 390 RPM |       |
|----------------------|---------------------------|----------------------|-------------|-------------|-----------------|-----------|------|---------|-------|---------|-------|---------|-------|---------|-------|---------|-------|
|                      | Plunger Dia. In.          | Plunger Area Sq. In. | BPD per RPM | GPM per RPM | Max. Press. PSI | BPD       | GPM  | BPD     | GPM   | BPD     | GPM   | BPD     | GPM   | BPD     | GPM   | BPD     | GPM   |
| 217Q-4L<br>(HP200AL) | 3.375                     | 8.9462               | 29.8759     | 0.8714      | 984             | 2988      | 87.1 | 4482    | 130.7 | 5976    | 174.3 | 7469    | 217.8 | 8963    | 261.4 | 11652   | 339.8 |
|                      | 3.250                     | 8.2958               | 27.7038     | 0.8080      | 1061            | 2771      | 80.8 | 4156    | 121.2 | 5541    | 161.6 | 6926    | 202.0 | 8312    | 242.4 | 10805   | 315.1 |
|                      | 3.125                     | 7.6699               | 25.6137     | 0.7471      | 1147            | 2562      | 74.7 | 3843    | 112.1 | 5123    | 149.4 | 6404    | 186.8 | 7685    | 224.1 | 9990    | 291.4 |
|                      | 3.000                     | 7.0686               | 23.6056     | 0.6885      | 1245            | 2361      | 68.8 | 3541    | 103.3 | 4722    | 137.7 | 5902    | 172.1 | 7082    | 206.5 | 9207    | 268.5 |
|                      | 2.875                     | 6.4918               | 21.6795     | 0.6323      | 1356            | 2168      | 63.2 | 3252    | 94.8  | 4336    | 126.5 | 5420    | 158.1 | 6504    | 189.7 | 8455    | 246.6 |
|                      | 2.750                     | 5.9396               | 19.8353     | 0.5785      | 1440            | 1984      | 57.9 | 2976    | 86.8  | 3968    | 115.7 | 4959    | 144.6 | 5951    | 173.6 | 7736    | 225.6 |
|                      | 2.625                     | 5.4119               | 18.0731     | 0.5271      | 1440            | 1808      | 52.7 | 2711    | 79.1  | 3615    | 105.4 | 4519    | 131.8 | 5422    | 158.1 | 7049    | 205.6 |
| 217Q-4M<br>(HP200AM) | 2.500                     | 4.9087               | 16.3928     | 0.4781      | 1793            | 1640      | 47.8 | 2459    | 71.7  | 3279    | 95.6  | 4099    | 119.5 | 4918    | 143.4 | 6394    | 186.5 |
|                      | 2.375                     | 4.4301               | 14.7945     | 0.4315      | 1986            | 1480      | 43.2 | 2220    | 64.7  | 2959    | 86.3  | 3699    | 107.9 | 4439    | 129.5 | 5770    | 168.3 |
|                      | 2.250                     | 3.9761               | 13.2782     | 0.3873      | 2213            | 1328      | 38.7 | 1992    | 58.1  | 2656    | 77.5  | 3320    | 96.8  | 3984    | 116.2 | 5179    | 151.0 |
|                      | 2.125                     | 3.5466               | 11.8438     | 0.3454      | 2481            | 1185      | 34.5 | 1777    | 51.8  | 2369    | 69.1  | 2961    | 86.4  | 3554    | 103.6 | 4620    | 134.7 |
|                      | 2.000                     | 3.1416               | 10.4914     | 0.3060      | 2801            | 1050      | 30.6 | 1574    | 45.9  | 2099    | 61.2  | 2623    | 76.5  | 3148    | 91.8  | 4092    | 119.3 |
|                      | 1.875                     | 2.7612               | 9.2209      | 0.2689      | 3187            | 923       | 26.9 | 1384    | 40.3  | 1845    | 53.8  | 2306    | 67.2  | 2767    | 80.7  | 3597    | 104.9 |
|                      | 1.750                     | 2.4053               | 8.0325      | 0.2343      | 3600            | 804       | 23.4 | 1205    | 35.1  | 1607    | 46.9  | 2009    | 58.6  | 2410    | 70.3  | 3133    | 91.4  |
| 217Q-4H<br>(HP200MS) | 1.625                     | 2.0739               | 6.9260      | 0.2020      | 4243            | 693       | 20.2 | 1039    | 30.3  | 1386    | 40.4  | 1732    | 50.5  | 2078    | 60.6  | 2702    | 78.8  |
|                      | 1.500                     | 1.7671               | 5.9014      | 0.1721      | 4980            | 591       | 17.2 | 886     | 25.8  | 1181    | 34.4  | 1476    | 43.0  | 1771    | 51.6  | 2302    | 67.1  |
|                      | 1.375                     | 1.4849               | 4.9588      | 0.1446      | 5926            | 496       | 14.5 | 744     | 21.7  | 992     | 28.9  | 1240    | 36.2  | 1488    | 43.4  | 1934    | 56.4  |
|                      | 1.250                     | 1.2272               | 4.0982      | 0.1195      | 6000            | 410       | 12.0 | 615     | 17.9  | 820     | 23.9  | 1025    | 29.9  | 1230    | 35.9  | 1599    | 46.6  |
|                      | Brake Horsepower Required |                      |             |             |                 | 56        |      | 84      |       | 112     |       | 139     |       | 167     |       | 217     |       |

| PUMP                 | Metric Units       |                              |                            |                |                 | 100 * RPM          |        | 150 RPM            |        | 200 RPM            |        | 250 RPM            |        | 300 RPM            |        | 390 RPM            |        |
|----------------------|--------------------|------------------------------|----------------------------|----------------|-----------------|--------------------|--------|--------------------|--------|--------------------|--------|--------------------|--------|--------------------|--------|--------------------|--------|
|                      | Plunger Dia. mm    | Plunger Area cm <sup>2</sup> | M <sup>3</sup> /Hr per RPM | L/Sec. per RPM | Max. Press. kPa | M <sup>3</sup> /Hr | L/Sec. | M <sup>3</sup> /Hr | L/Sec. | M <sup>3</sup> /Hr | L/Sec. | M <sup>3</sup> /Hr | L/Sec. | M <sup>3</sup> /Hr | L/Sec. | M <sup>3</sup> /Hr | L/Sec. |
| 217Q-4L<br>(HP200AL) | 86                 | 57.717                       | 0.1979                     | 0.0550         | 6782            | 19.8               | 5.5    | 29.7               | 8.2    | 39.6               | 11.0   | 49.5               | 13.7   | 59.4               | 16.5   | 77.2               | 21.4   |
|                      | 83                 | 53.521                       | 0.1835                     | 0.0510         | 7314            | 18.4               | 5.1    | 27.5               | 7.6    | 36.7               | 10.2   | 45.9               | 12.7   | 55.1               | 15.3   | 71.6               | 19.9   |
|                      | 79                 | 49.483                       | 0.1697                     | 0.0471         | 7911            | 17.0               | 4.7    | 25.4               | 7.1    | 33.9               | 9.4    | 42.4               | 11.8   | 50.9               | 14.1   | 66.2               | 18.4   |
|                      | 76                 | 45.604                       | 0.1564                     | 0.0434         | 8584            | 15.6               | 4.3    | 23.5               | 6.5    | 31.3               | 8.7    | 39.1               | 10.9   | 46.9               | 13.0   | 61.0               | 16.9   |
|                      | 73                 | 41.883                       | 0.1436                     | 0.0399         | 9346            | 14.4               | 4.0    | 21.5               | 6.0    | 28.7               | 8.0    | 35.9               | 10.0   | 43.1               | 12.0   | 56.0               | 15.6   |
|                      | 70                 | 38.320                       | 0.1314                     | 0.0365         | 9929            | 13.1               | 3.6    | 19.7               | 5.5    | 26.3               | 7.3    | 32.8               | 9.1    | 39.4               | 10.9   | 51.2               | 14.2   |
|                      | 67                 | 34.915                       | 0.1197                     | 0.0333         | 9929            | 12.0               | 3.3    | 18.0               | 5.0    | 23.9               | 6.7    | 29.9               | 8.3    | 35.9               | 10.0   | 46.7               | 13.0   |
| 217Q-4M<br>(HP200AM) | 64                 | 31.669                       | 0.1086                     | 0.0302         | 12360           | 10.9               | 3.0    | 16.3               | 4.5    | 21.7               | 6.0    | 27.1               | 7.5    | 32.6               | 9.0    | 42.3               | 11.8   |
|                      | 60                 | 28.581                       | 0.0980                     | 0.0272         | 13696           | 9.8                | 2.7    | 14.7               | 4.1    | 19.6               | 5.4    | 24.5               | 6.8    | 29.4               | 8.2    | 38.2               | 10.6   |
|                      | 57                 | 25.652                       | 0.0880                     | 0.0244         | 15260           | 8.8                | 2.4    | 13.2               | 3.7    | 17.6               | 4.9    | 22.0               | 6.1    | 26.4               | 7.3    | 34.3               | 9.5    |
|                      | 54                 | 22.881                       | 0.0785                     | 0.0218         | 17108           | 7.8                | 2.2    | 11.8               | 3.3    | 15.7               | 4.4    | 19.6               | 5.4    | 23.5               | 6.5    | 30.6               | 8.5    |
|                      | 51                 | 20.268                       | 0.0695                     | 0.0193         | 19313           | 6.9                | 1.9    | 10.4               | 2.9    | 13.9               | 3.9    | 17.4               | 4.8    | 20.8               | 5.8    | 27.1               | 7.5    |
|                      | 48                 | 17.814                       | 0.0611                     | 0.0170         | 21974           | 6.1                | 1.7    | 9.2                | 2.5    | 12.2               | 3.4    | 15.3               | 4.2    | 18.3               | 5.1    | 23.8               | 6.6    |
|                      | 44                 | 15.518                       | 0.0532                     | 0.0148         | 24821           | 5.3                | 1.5    | 8.0                | 2.2    | 10.6               | 3.0    | 13.3               | 3.7    | 16.0               | 4.4    | 20.7               | 5.8    |
| 217Q-4H<br>(HP200MS) | 41                 | 13.380                       | 0.0459                     | 0.0127         | 29256           | 4.6                | 1.3    | 6.9                | 1.9    | 9.2                | 2.5    | 11.5               | 3.2    | 13.8               | 3.8    | 17.9               | 5.0    |
|                      | 38                 | 11.401                       | 0.0391                     | 0.0109         | 34335           | 3.9                | 1.1    | 5.9                | 1.6    | 7.8                | 2.2    | 9.8                | 2.7    | 11.7               | 3.3    | 15.2               | 4.2    |
|                      | 35                 | 9.580                        | 0.0328                     | 0.0091         | 40861           | 3.3                | 0.9    | 4.9                | 1.4    | 6.6                | 1.8    | 8.2                | 2.3    | 9.9                | 2.7    | 12.8               | 3.6    |
|                      | 32                 | 7.917                        | 0.0271                     | 0.0075         | 41369           | 2.7                | 0.8    | 4.1                | 1.1    | 5.4                | 1.5    | 6.8                | 1.9    | 8.1                | 2.3    | 10.6               | 2.9    |
|                      | Kilowatts Required |                              |                            |                |                 | 42                 |        | 63                 |        | 84                 |        | 104                |        | 124                |        | 162                |        |

Volumetric Rate is based on 100% Volumetric Efficiency. Brake Horsepower/Kilowatts Required is based on 90% Mechanical Efficiency. \*Operation below 150 RPM requires an "optional" externally-mounted auxiliary lubrication system.

The information and data on this sheet is accurate to the best of our knowledge and belief, but are intended for general information only. Applications suggested for the materials are described only to help readers make their own evaluations and decisions, and are neither guarantees nor to be construed as express or implied warranties of suitability for these or other applications. National Oilwell makes no warranty either express or implied beyond that stipulated in National Oilwell Standard Terms and Conditions of Sale.

Authorized Distributor:



www.nov.com • mission.sales@nov.com  
 10000 Richmond, Houston, Texas 77042  
 (713)346-7500 (phone) • (713)346-7366 (fax)