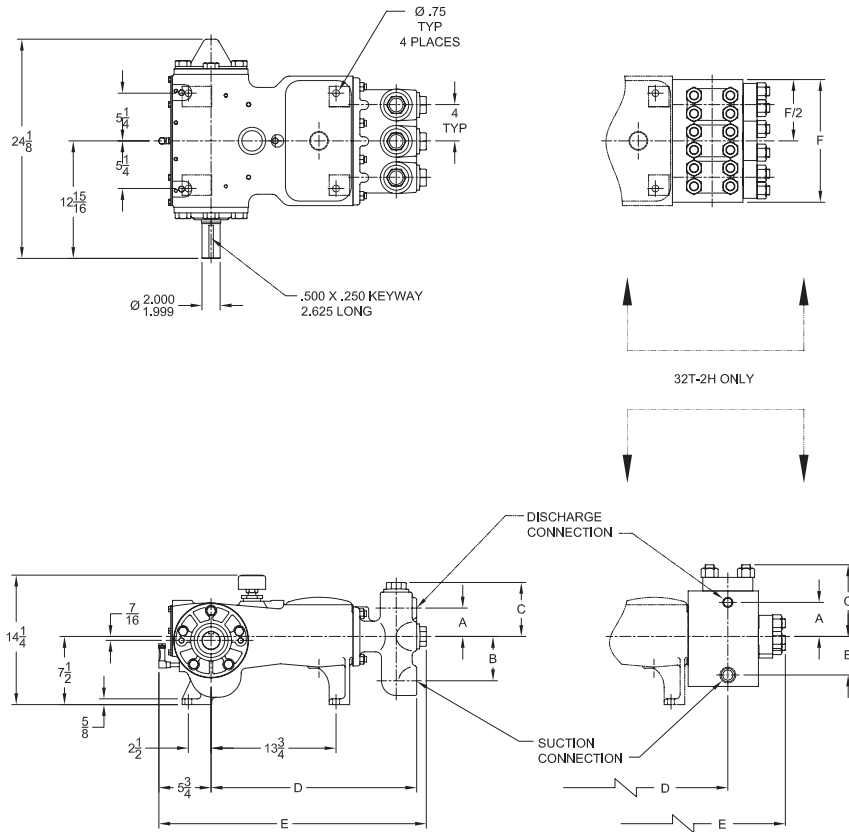


32T-2 Triplex Plunger Pump



Pump size in.(mm)

maximum plunger size x stroke length, in.(mm):
2.000 x 2.250 (50.8 x 57.15)

Rated

BHP (kW) at 465 RPM: 32 (24)

Rated plunger load pounds (Kg)

3600 (1633)

Max discharge pressure psi(kPa)

“L” model: 2037 (14046)

“M” model: 2565 (17685)

“H” model: 4600 (31716)

Crankshaft extension in.(mm)

Diameter: 2.000 (50.8)

Length: 3.875 (98.4)

Keyway width x depth: 1/2 x 1/4 (12.7 x 6.35)

Maximum recommended sheave diameter: 33.5 (850.9)

For larger sizes: **Contact Factory**

Oil Capacity gallons (L)

Crankcase: 1-1/4 (4.73)

Weight pounds (Kg)

395 (179)

pump only on wood shipping skids

Oil capacity gallons (L)

Crankcase: 2 (7.6)

Gear Reducer: 1 (3.8)

Standard Materials for Fluid Ends:

“L” & “M” models

Cast Ductile Iron

Cast Nickel-Aluminum-Bronze

Cast 316 Stainless Steel

Forged/Plate Carbon Steel

“H” model

Forged 15-5 Stainless Steel

Pump Model	Flange Connections		Dimension (inches)					
	Discharge Connection Sizes	Suction Connection Sizes	A	B	C	D	E	F
32T-2L	1 (25.4)-11 1/2 NPT	2 (50.8)-11 1/2 NPT	3 3/8	4 7/8	5 15/16	22 5/8	29 1/2	11 1/2
32T-2M	1 (25.4)-11 1/2 NPT	2 (50.8)-11 1/2 NPT	3 1/8	4 7/8	5 15/16	22 5/8	29 1/2	11 1/2
32T-2H	3/4 (19.1)-14 NPT	1 1/4 (31.8)-11 1/2 NPT	3 3/4	4 1/4	7 7/8	20	32 1/8	13 1/2

32T-2 Triplex Plunger Pump

Performance Data

Pump	English Units					50 RPM		150 RPM		200 RPM		250 RPM		350 RPM		465 RPM	
	Plunger Dia. In.	Plunger Area Sq. In.	BPD per RPM	GPM per RPM	Max. Press. PSI	BPD	GPM	BPD	GPM	BPD	GPM	BPD	GPM	BPD	GPM	BPD	GPM
32T-2L (T225LS)	2.000	3.142	3.147	0.092	1146	158	4.59	473	13.8	630	18.4	787	22.9	1102	32.1	1464	42.7
	1.750	2.405	2.410	0.070	1497	121	3.51	362	10.5	482	14.1	603	17.6	844	24.6	1121	32.7
	1.500	1.767	1.770	0.052	2037	89	2.58	266	7.7	355	10.3	443	12.9	620	18.1	824	24.0
32T-2M (T225M)	1.750	2.405	2.410	0.070	1497	121	3.51	362	10.5	482	14.1	603	17.6	844	24.6	1121	32.7
	1.500	1.767	1.770	0.052	2037	89	2.58	266	7.75	355	10.3	443	12.9	620	18.1	824	24.0
	1.250	1.227	1.230	0.036	2565	62	1.79	185	5.38	246	7.17	308	8.96	431	12.6	572	16.7
32T-2H (T225H)	1.000	0.785	0.787	0.023	4584	40	1.15	119	3.44	158	4.59	197	5.74	276	8.03	366	10.7
	0.750	0.442	0.443	0.013	4600	23	0.65	67	1.94	89	2.58	111	3.23	155	4.52	206	6.00
Brake Horsepower Required						3.4		10.2		13.6		17		24		32	

Pump	Metric Units					50 RPM		150 RPM		200 RPM		250 RPM		350 RPM		465 RPM	
	Plunger Dia. cm	Plunger Area cm ²	M ³ /Hr per RPM	L/Sec. per RPM	Max. Press. kPa	M ³ /Hr	L/Sec.	M ³ /Hr	L/Sec.	M ³ /Hr	L/Sec.	M ³ /Hr	L/Sec.	M ³ /Hr	L/Sec.	M ³ /Hr	L/Sec.
32T-2L (T225LS)	51	20.268	0.021	0.006	7901	1.04	0.29	3.13	0.87	4.17	1.16	5.21	1.45	7.30	2.03	9.69	2.69
	44	15.518	0.016	0.004	10319	0.80	0.22	2.39	0.67	3.19	0.89	3.99	1.11	5.59	1.55	7.42	2.06
	38	11.401	0.012Z	0.003	14046	0.59	0.16	1.76	0.49	2.35	0.65	2.93	0.81	4.10	1.14	5.45	1.51
32T-2M (T225M)	44	15.518	0.016	0.004	10319	0.80	0.22	2.39	0.67	3.19	0.89	3.99	1.11	5.59	1.55	7.42	2.06
	38	11.401	0.012	0.003	14046	0.59	0.16	1.76	0.49	2.35	0.65	2.93	0.81	4.10	1.14	5.45	1.51
	32	7.917	0.008	0.002	17685	0.41	0.11	1.22	0.34	1.63	0.45	2.04	0.57	2.85	0.79	3.79	1.05
32T-2H (T225H)	25	5.067	0.005	0.001	31603	0.26	0.07	0.78	0.22	1.04	0.29	1.30	0.36	1.82	0.51	2.42	0.67
	19	2.850	0.003	0.001	31716	0.15	0.04	0.44	0.12	0.59	0.16	0.73	0.20	1.03	0.29	1.36	0.38
Kilowatts Required						2.5		7.6		10.2		12.7		18		24	

For operation below 75 RPM, an auxiliary lubrication system is required.

Volumetric Rate is based on 100% Volumetric Efficiency. Brake Horsepower/Kilowatts Required is based on 90% Mechanical Efficiency.

The information and data on this sheet is accurate to the best of our knowledge and belief, but are intended for general information only. Applications suggested for the materials are described only to help readers make their own evaluations and decisions, and are neither guarantees nor to be construed as express or implied warranties of suitability for these or other applications. NOV Inc. makes no warranty either express or implied beyond that stipulated in NOV Inc. Standard Terms and Conditions of Sale.