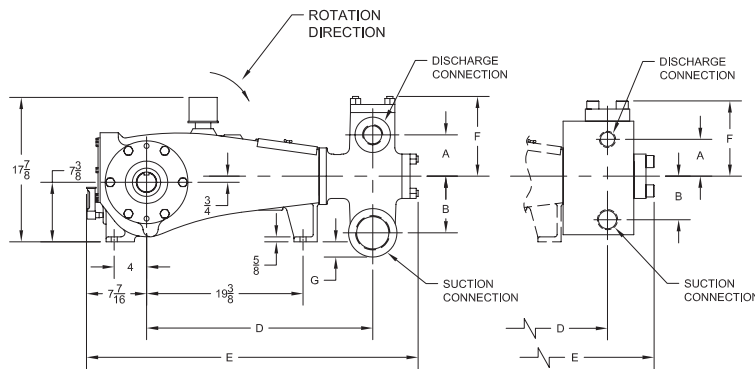
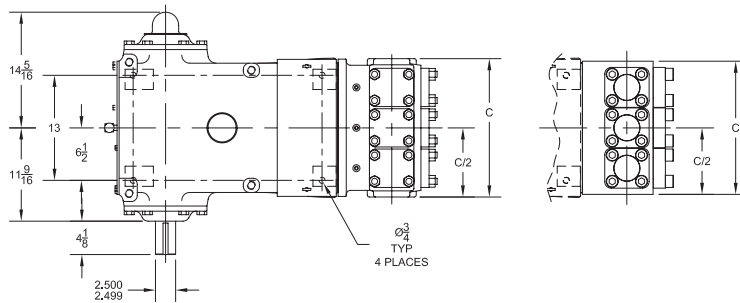


59T-3 Triplex Plunger Pump



Pump size in.(mm)

maximum plunger size x stroke length:
3.00 x 3.500 (76.2 x 88.9)

Rated

BHP (kW) at 420 RPM: 59 (44)

Rated plunger load pounds (Kg)

4760 (2159)

Max discharge pressure psi(kPa)

"L" model: 970 (6686)

"M" model: 2295 (15825)

"MS" model: 4789 (33017)

"H" model: 10000 (68948)

Crankshaft extension in.(mm)

Diameter: 2.500 (63.5)

Length: 4.13 (104.9)

Keyway width x depth: 5/8 x 5/16 (15.88 x 7.94)

Maximum recommended sheave diameter: 38 (965.2)

For larger sizes: **Contact Factory**

Pinion shaft extension in.(mm)

if gear reducer is supplied

For belt or chain drive: **Contact Factory**

For direct drive: Diameter: 2.000 (50.8)

Length: 4.250 (108.0)

Keyway width x depth: 1/2 x 1/4 (12.70 x 6.35)

Accessory gear reduction unit:

3.00:1, 3.12:1, 3.23:1, 3.36:1, 3.49:1,

3.62:1, 3.78:1, 3.94:1, 4.11:1, 4.29:1,

4.48:1, 4.69:1, 4.93:1, 5.17:1

Oil capacity gallons (L)

Crankcase: 2.50 (9.46)

Gear Reducer - varies with ratio:

1.25 to 1.50 (4.73 to 5.68)

Weight pounds (Kg)

"L" model: 1100 (499)

"M" model: 980 (445)

"MS" model: 1080 (490)

"H" model: 1035 (469)

pump only on wood shipping skids

Standard materials for fluid ends:

"L" model

Cast Ductile Iron

Forged/Plate Carbon Steel

Cast Nickel-Aluminum-Bronze

Cast Duplex Stainless Steel

"M" model

Cast Ductile Iron

Cast/Forged/Plate Carbon Steel

Cast Nickel-Aluminum-Bronze

Cast Duplex Stainless Steel

"MS" model

Forged Nickel-Aluminum-Bronze

Forged 316 Stainless Steel

Forged/Plate Carbon Steel

"H" model

Forged 15-5 Stainless Steel

Pump Model	Flange Connections		Dimensions (Inches)						
	Discharge Connection Sizes	Suction Connection Sizes	A	B	C	D	E	F	
59T-3L	2 1/2 (63.5)-8 NPT	4 (101.6)-8 NPT	5 1/8	7	17 1/8	28	41 1/16	9 7/8	1 7/8
59T-3M	2 (50.8)-11 1/2 NPT	2 1/2 (63.5)-8 NPT	3 7/16	5 3/8	16 5/8	27 3/16	40 5/16	8 1/8	-3/4
59T-3MS	2 (50.8)-11 1/2 NPT	2 1/2 (63.5)-8 NPT	4 9/16	5 3/8	16 1/2	26 7/8	40 1/16	9 5/16	-7/8
59T-3H	1 (25.4)-11 1/2 NPT	1 1/2 (38.1)-11 1/2 NPT	3 7/8	4 3/8	28	24 3/4	39 5/8	8 3/16	-7/8

59T-3 Triplex Plunger Pump

Performance Data

Pump	English Units					50 RPM		150 RPM		250 RPM		300 RPM		350 RPM		420 RPM	
	Plunger Dia. In.	Plunger Area Sq. In.	BPD per RPM	GPM per RPM	Max. Press. PSI	BPD	GPM	BPD	GPM	BPD	GPM	BPD	GPM	BPD	GPM	BPD	GPM
59T-3L (T365AL)	3.000	7.069	11.016	0.321	673	551	16.1	1653	48.19	2754	80.32	3305	96.39	3856	112.5	4627	134.9
	2.750	5.940	9.257	0.270	801	463	13.50	1389	40.50	2315	67.50	2777	80.99	3240	94.49	3888	113.4
	2.500	4.909	7.650	0.223	970	383	11.16	1148	33.47	1913	55.78	2295	66.94	2678	78.09	3213	93.71
59T-3M (T365AM)	2.500	4.909	7.650	0.223	970	383	11.16	1148	33.47	1913	55.78	2295	66.94	2678	78.09	3213	93.71
	2.250	3.976	6.197	0.181	1197	310	9.04	930	27.11	1550	45.18	1859	54.22	2169	63.26	2603	75.91
	2.000	3.142	4.896	0.143	1515	245	7.14	735	21.42	1224	35.70	1469	42.84	1714	49.98	2057	59.98
59T-3MS (T365MS)	1.750	2.405	3.749	0.109	1979	188	5.47	563	16.40	938	27.33	1125	32.80	1312	38.27	1575	45.92
	1.500	1.767	2.754	0.080	2694	138	4.02	414	12.05	689	20.08	827	24.10	964	28.11	1157	33.74
	1.250	1.227	1.913	0.056	3879	96	2.79	287	8.37	479	13.95	574	16.73	670	19.52	804	23.43
59T-3H (T365H)	1.000	0.785	1.224	0.036	6061	62	1.78	184	5.35	306	8.92	368	10.71	429	12.49	515	14.99
	0.750	0.442	0.689	0.020	10000	35	1.00	104	3.01	173	5.02	207	6.02	241	7.03	290	8.43
Brake Horsepower Required						7		21		35		42		49		59	

Pump	Metric Units					50 RPM		150 RPM		250 RPM		300 RPM		350 RPM		420 RPM	
	Plunger Dia. mm	Plunger Area cm ²	M ³ /Hr per RPM	L/Sec. per RPM	Max. Press. kPa	M ³ /Hr	L/Sec.	M ³ /Hr	L/Sec.	M ³ /Hr	L/Sec.	M ³ /Hr	L/Sec.	M ³ /Hr	L/Sec.	M ³ /Hr	L/Sec.
59T-3L (T365AL)	76	45.604	0.073	0.020	4643	3.65	1.01	10.95	3.04	18.24	5.07	21.89	6.08	25.54	7.09	30.65	8.51
	70	38.320	0.061	0.017	5526	3.07	0.85	9.20	2.55	15.33	4.26	18.39	5.11	21.46	5.96	25.75	7.15
	64	31.669	0.051	0.014	6686	2.53	0.70	7.60	2.11	12.67	3.52	15.20	4.22	17.74	4.93	21.28	5.91
59T-3M (T365AM)	64	31.669	0.051	0.014	6686	2.53	0.70	7.60	2.11	12.67	3.52	15.20	4.22	17.74	4.93	21.28	5.91
	57	25.652	0.041	0.011	8254	2.05	0.57	6.16	1.71	10.26	2.85	12.31	3.42	14.37	3.99	17.24	4.79
	51	20.268	0.032	0.009	10447	1.62	0.45	4.86	1.35	8.11	2.25	9.73	2.70	11.35	3.15	13.62	3.78
59T-3MS (T365MS)	44	15.518	0.025	0.007	13645	1.24	0.34	3.72	1.03	6.21	1.72	7.45	2.07	8.69	2.41	10.43	2.90
	38	11.401	0.018	0.005	18572	0.91	0.25	2.74	0.76	4.56	1.27	5.47	1.52	6.38	1.77	7.66	2.13
	32	7.917	0.013	0.004	26744	0.63	0.18	1.90	0.53	3.17	0.88	3.80	1.06	4.43	1.23	5.32	1.48
59T-3H (T365H)	25	5.067	0.008	0.002	41787	0.41	0.11	1.22	0.34	2.03	0.56	2.43	0.68	2.84	0.79	3.41	0.95
	19	2.850	0.005	0.001	68948	0.23	0.06	0.68	0.19	1.14	0.32	1.37	0.38	1.60	0.44	1.92	0.53
Kilowatts Required						5		16		26		31		37		44	

For operation below 50 RPM, an auxiliary lubrication system is required.

Volumetric Rate is based on 100% Volumetric Efficiency. Brake Horsepower/Kilowatts Required is based on 90% Mechanical Efficiency.*For Speeds above 420 RPM - consult the Factory..

The information and data on this sheet is accurate to the best of our knowledge and belief, but are intended for general information only. Applications suggested for the materials are described only to help readers make their own evaluations and decisions, and are neither guarantees nor to be construed as express or implied warranties of suitability for these or other applications. NOV Inc. makes no warranty either express or implied beyond that stipulated in NOV Inc. Standard Terms and Conditions of Sale.