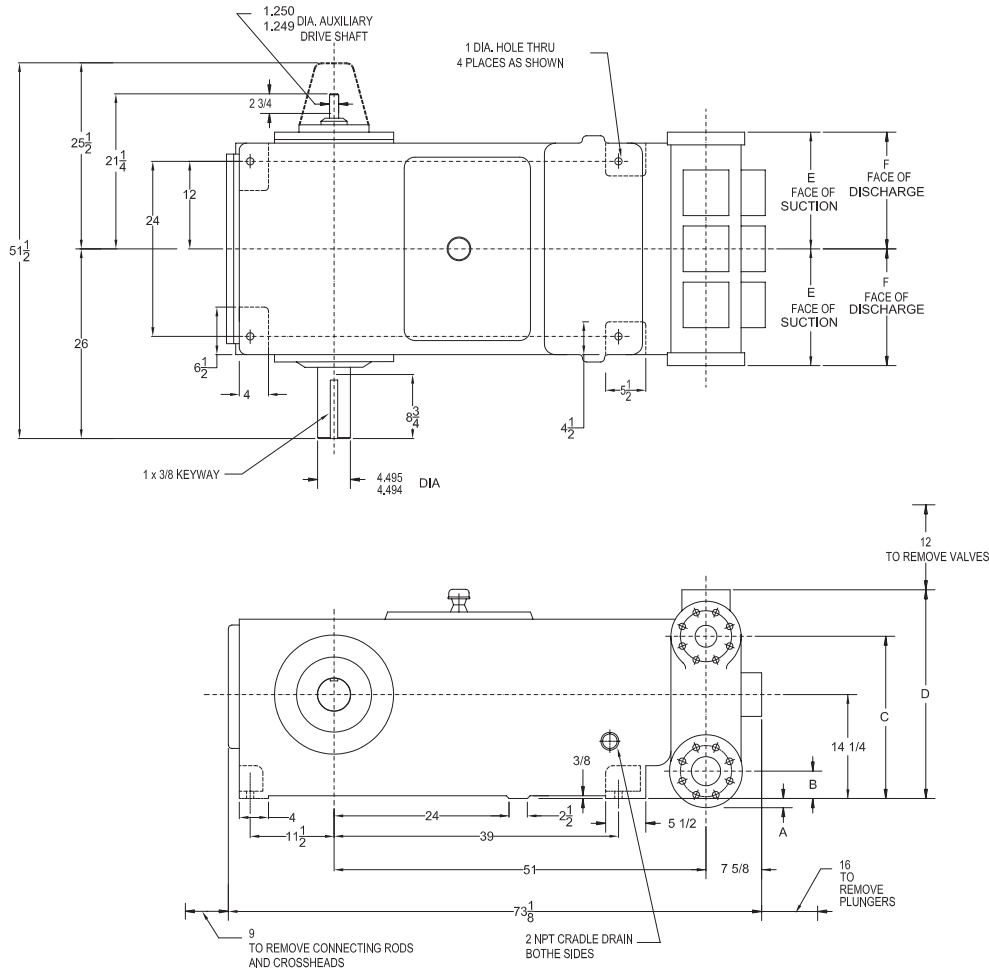


202T-6 Triplex Plunger Pump

Specifications



Pump Size

maximum plunger size x stroke length, in.(mm):
4 1/4 x 6 (107.9 x 152.4)

Rated bhp at 320 rpm (kw): 202 (150.58)

Rated plunger load, pounds(Kg): 12,500(5670)

Maximum discharge pressure: psi(kPa)

"L" model: 1500 (10,342)

"M" model: 3180 (21,925)

Crankshaft extension: in.(mm)

Diameter: 4.495 (114.17)

Length: 8 3/4 (222.25)

Keyway (width x depth):

1 x 3/8 (25.4 x 9.53)

Maximum recommended sheave,

in.(mm): 58 (1473)

Minimum recommended sheave,

in.(mm): 36 (914)

For larger sizes: **Contact Factory**

Pinion shaft extension,

if gear reducer is supplied, in.(mm)

For belt or chain drive:

Contact Factory

For direct drive: Diameter: 3.438 (87.33)

Length: 7 3/8 (187.33)

Keyway (width x depth):

7/8 x 7/16 (22.2 x 11.1)

Accessory gear reduction unit:

1.59:1, 1.78:1, 2.487:1, 3.12:1,

4.44:1, 5.48:1

Oil Capacity, gallons (L)

Crankcase: 34 (128.7)

Gear Reducer: **Varies with ratio**

Weight, pump only on

wood shipping skids pounds (Kg):

3952 (1792.60)

Pump Model	Flange Connections		Dimensions (Inches)					
	Discharge Connection Sizes	Suction Connection Sizes	A	B	C	D	E	F
202T-6L	3 ANSI-600 L.R.	6 ANSI-150 F.F.	1 3/4	3 3/4	22 1/4	28 5/8	13 1/2	13 1/2
202T-6M	2 1/2 ANSI-1500 L.R.	4 ANSI-150 F.F.	-	5 3/4	22	28 1/4	16	16

202T-6 Triplex Plunger Pump

Performance Data

PUMP	English Units					100 RPM		150 RPM		200 RPM		250 RPM		300 RPM		320 RPM	
	Plunger Dia. In.	Plunger Area Sq. In.	BPD per RPM	GPM per RPM	Max. Press. PSI	BPD	GPM	BPD	GPM	BPD	GPM	BPD	GPM	BPD	GPM	BPD	GPM
202T-6L	4.250	14.1862	37.9001	1.1054	881	3791	110.5	5686	165.8	7581	221.1	9476	276.4	11371	331.6	12129	353.7
	4.125	13.3640	35.7035	1.0414	935	3571	104.1	5356	156.2	7141	208.3	8926	260.3	10712	312.4	11426	333.2
	4.000	12.5664	33.5725	0.9792	995	3358	97.9	5036	146.9	6715	195.8	8394	244.8	10072	293.8	10744	313.3
	3.875	11.7932	31.5070	0.9190	1060	3151	91.9	4727	137.8	6302	183.8	7877	229.7	9453	275.7	10083	294.1
	3.750	11.0447	29.5070	0.8606	1132	2951	86.1	4427	129.1	5902	172.1	7377	215.2	8853	258.2	9443	275.4
	3.625	10.3206	27.5727	0.8042	1211	2758	80.4	4136	120.6	5515	160.8	6894	201.1	8272	241.3	8824	257.3
	3.500	9.6211	25.7039	0.7497	1299	2571	75.0	3856	112.5	5141	149.9	6426	187.4	7712	224.9	8226	239.9
	3.375	8.9462	23.9007	0.6971	1397	2391	69.7	3586	104.6	4781	139.4	5976	174.3	7171	209.1	7649	223.1
	3.250	8.2958	22.1631	0.6464	1500	2217	64.6	3325	97.0	4433	129.3	5541	161.6	6649	193.9	7093	206.9
	3.125	7.6699	20.4910	0.5977	1500	2050	59.8	3074	89.6	4099	119.5	5123	149.4	6148	179.3	6558	191.2
3.000	7.0686	18.8845	0.5508	1500	1889	55.1	2833	82.6	3777	110.2	4722	137.7	5666	165.2	6044	176.3	
202T-6M	3.000	7.0686	18.8845	0.5508	1768	1889	55.1	2833	82.6	3777	110.2	4722	137.7	5666	165.2	6044	176.3
	2.875	6.4918	17.3436	0.5059	1926	1735	50.6	2602	75.9	3469	101.2	4336	126.5	5204	151.8	5550	161.9
	2.750	5.9396	15.8682	0.4628	2105	1587	46.3	2381	69.4	3174	92.6	3968	115.7	4761	138.8	5078	148.1
	2.625	5.4119	14.4584	0.4217	2310	1446	42.2	2169	63.3	2892	84.3	3615	105.4	4338	126.5	4627	134.9
	2.500	4.9087	13.1142	0.3825	2546	1312	38.2	1968	57.4	2623	76.5	3279	95.6	3935	114.7	4197	122.4
	2.000	3.1416	8.3931	0.2448	3180	840	24.5	1259	36.7	1679	49.0	2099	61.2	2518	73.4	2686	78.3
Brake Horsepower Required						64	81	127	158	189	202						

PUMP	Metric Units					100 RPM		150 RPM		200 RPM		250 RPM		300 RPM		320 RPM	
	Plunger Dia. mm	Plunger Area cm ²	M ³ /Hr per RPM	L/Sec. per RPM	Max. Press. kPa	M ³ /Hr	L/Sec.	M ³ /Hr	L/Sec.	M ³ /Hr	L/Sec.	M ³ /Hr	L/Sec.	M ³ /Hr	L/Sec.	M ³ /Hr	L/Sec.
202T-6L	108	91.524	0.2510	0.0697	6075	25.1	7.0	37.7	10.5	50.2	13.9	62.8	17.4	75.3	20.9	80.3	22.3
	105	86.219	0.2365	0.0657	6449	23.6	6.6	35.5	9.9	47.3	13.1	59.1	16.4	70.9	19.7	75.7	21.0
	102	81.073	0.2224	0.0618	6858	22.2	6.2	33.4	9.3	44.5	12.4	55.6	15.4	66.7	18.5	71.2	19.8
	98	76.085	0.2087	0.0580	7308	20.9	5.8	31.3	8.7	41.7	11.6	52.2	14.5	62.6	17.4	66.8	18.6
	95	71.256	0.1954	0.0543	7803	19.5	5.4	29.3	8.1	39.1	10.9	48.9	13.6	58.6	16.3	62.5	17.4
	92	66.584	0.1826	0.0507	8351	18.3	5.1	27.4	7.6	36.5	10.1	45.7	12.7	54.8	15.2	58.4	16.2
	89	62.072	0.1703	0.0473	8958	17.0	4.7	25.5	7.1	34.1	9.5	42.6	11.8	51.1	14.2	54.5	15.1
	86	57.717	0.1583	0.0440	9634	15.8	4.4	23.7	6.6	31.7	8.8	39.6	11.0	47.5	13.2	50.7	14.1
	83	53.521	0.1468	0.0408	10342	14.7	4.1	22.0	6.1	29.4	8.2	36.7	10.2	44.0	12.2	47.0	13.1
	79	49.483	0.1357	0.0377	10342	13.6	3.8	20.4	5.7	27.1	7.5	33.9	9.4	40.7	11.3	43.4	12.1
76	45.604	0.1251	0.0347	10342	12.5	3.5	18.8	5.2	25.0	6.9	31.3	8.7	37.5	10.4	40.0	11.1	
202T-6M	76	45.604	0.1251	0.0347	12193	12.5	3.5	18.8	5.2	25.0	6.9	31.3	8.7	37.5	10.4	40.0	11.1
	73	41.883	0.1149	0.0319	13276	11.5	3.2	17.2	4.8	23.0	6.4	28.7	8.0	34.5	9.6	36.8	10.2
	70	38.320	0.1051	0.0292	14510	10.5	2.9	15.8	4.4	21.0	5.8	26.3	7.3	31.5	8.8	33.6	9.3
	67	34.915	0.0958	0.0266	15925	9.6	2.7	14.4	4.0	19.2	5.3	23.9	6.7	28.7	8.0	30.6	8.5
	64	31.669	0.0869	0.0241	17557	8.7	2.4	13.0	3.6	17.4	4.8	21.7	6.0	26.1	7.2	27.8	7.7
	51	20.268	0.0556	0.0154	21925	5.6	1.5	8.3	2.3	11.1	3.1	13.9	3.9	16.7	4.6	17.8	4.9
Kilowatts Required						48	60	95	118	141	151						

Volumetric Rate is based on 100% Volumetric Efficiency. Brake Horsepower/Kilowatts Required is based on 90% Mechanical Efficiency. Not all plunger sizes are shown. Contact National-Oilwell for additional information. For Operation below 120 RPM, an auxiliary lubrication system is required.

The information and data on this sheet is accurate to the best of our knowledge and belief, but are intended for general information only. Applications suggested for the materials are described only to help readers make their own evaluations and decisions, and are neither guarantees nor to be construed as express or implied warranties of suitability for these or other applications. National Oilwell makes no warranty either express or implied beyond that stipulated in National Oilwell Standard Terms and Conditions of Sale.

Authorized Distributor:



www.nov.com • mission.sales@nov.com
 10000 Richmond, Houston, Texas 77042
 (713)346-7500 (phone) • (713)346-7366 (fax)