

Seal Bore Packer Accessories

The NOV Seal Bore Packer Accessories offers a complete line of packer accessories to complement the seal bore packer line including standard extensions, millout extensions, couplings, crossovers and adapters. Standard material is AISI 4130-4145 80 KSI. Premium materials are available upon request.

Packer to Seal Bore Extension Bottom

The NOV Seal Bore Extension Bottom is used as the bottom sub of the packer to back-up the lower slips and allow the use of a Seal Bore Extension to be installed directly below the packer mandrel.

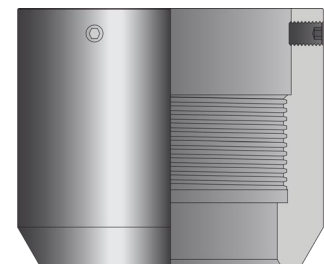
Packer to SBE bottom



Plain Bottom

The NOV Plain Bottom is used on the bottom of the packer to back-up the lower slips and has a tapered I.D. to act as a wireline guide for wireline tools run below the packer to re-enter the packer bore during retrieval. The Plain Bottom may also be run on the bottom of Seal Bore Extension run below the packer.

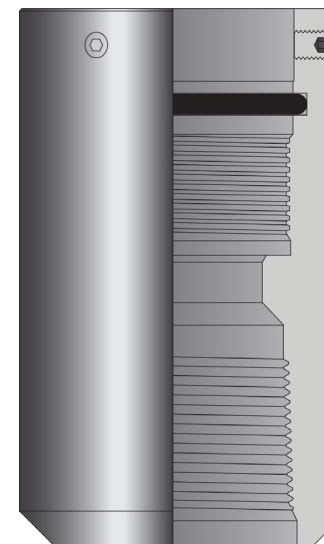
Plain Bottom



Packer to Mill-Out Adapter 20-054

The NOV Packer to Mill-Out Adapter is used to back-up the lower slips and to run a Non-Sealing Extension (Mill-out Extension) directly below the packer or below a Seal Bore Extension.

Packer to MOE X-over

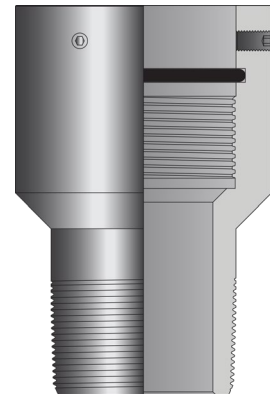


Seal Bore Packer Accessories

Packer to Tubing Adapter 20-200

The NOV Tubing Adapter is used on the bottom of the packer to back-up the lower slips and crossover for running tubing below the packer. Premium threads available on request.

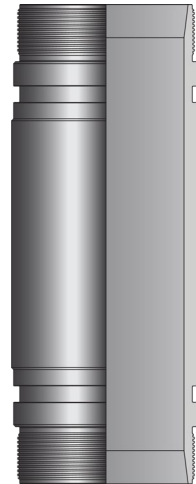
Tubing Adapter Bottom



Seal Bore Extension 20-065

The NOV Seal Bore Extension is run below the Packer to Seal Bore Extension Bottom Sub for applications where floating seals are needed to allow tubing expansion and contraction. The Seal Bore Extensions have the same I.D. as the packer to provide a continuous seal bore.

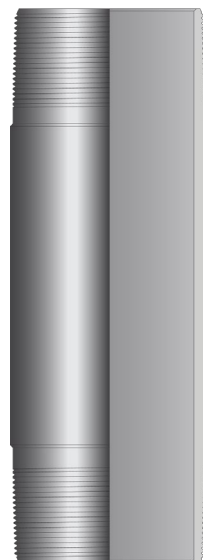
Seal Bore Extension



Mill-Out Extension 20-056

The NOV Mill-Out Extension is run below Permanent Seal Bore Packers to allow sufficient inside diameter to accommodate the mandrel and catch of most common packer milling tools.

Mill Out Extension



Seal Bore Packer Accessories

Seal Bore Coupling 20-060

The NOV Seal Bore Coupling is used to connect Seal Bore Extensions together allowing additional seal bore length to be added below the packer.



Seal Bore Extension to Tubing Adapter 20-061

The NOV Extension to Tubing Adapter is used below the Seal Bore Extension as a crossover to tubing. Premium threads available on request.

