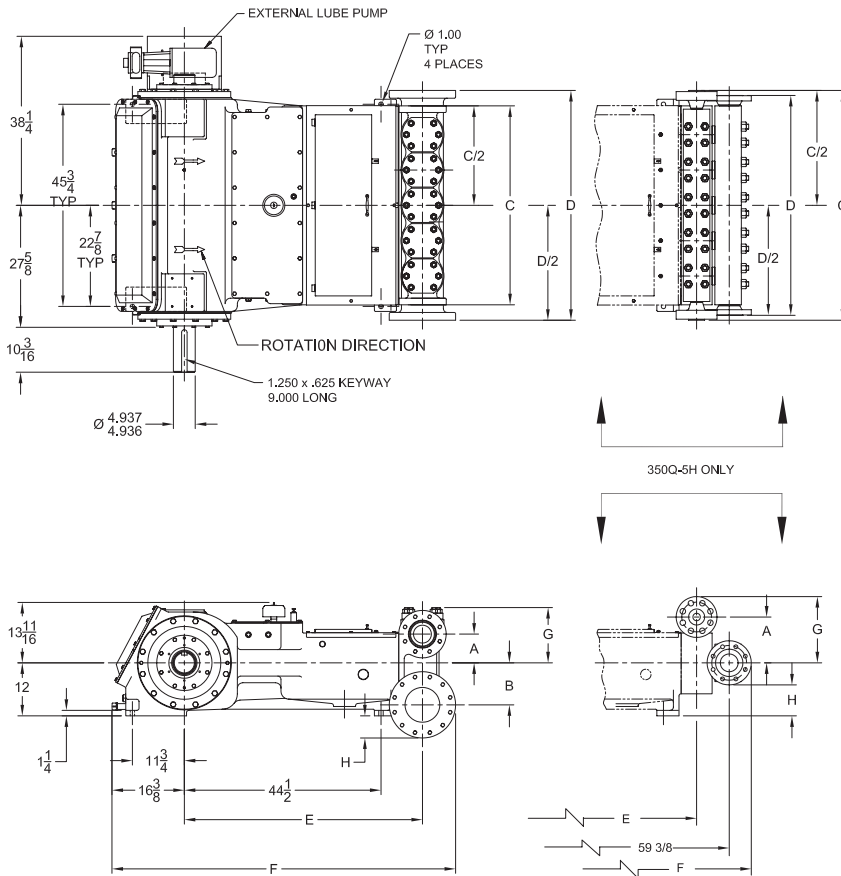


350Q-5 Quintuplex Plunger Pump



Pump size in.(mm)

(maximum plunger size x stroke length:
4.000 x 5.000 (101.6 x 127)

Rated bhp at 500 rpm (kw)

350 (261)

Rated plunger load pounds (Kg)

13850(6282)

Max discharge pressure psi(kPa)

“L” model: 1670 (11511)

“M” model: 3483 (24017)

“H” model: 6000 (41369)

Crankshaft extension in.(mm)

Diameter: 4.937 (125.4)

Length: 10.188 (258.8)

Keyway (width x depth): 1 1/4 x 5/8 (31.8 x 15.9)

Maximum recommended sheave diameter: 63 (1346.2)

For larger sizes: **Contact Factory**

Oil capacity gallons (L)

Crankcase: 25.0 (94.63)

Weight pounds (Kg)

pump only on wood shipping skids: 9000 (4082)

Standard materials for fluid end bodies:

“L” & “M” models

Cast Nickel-Aluminum-Bronze

Cast Duplex Stainless Steel

Forged/Plate Carbon Steel

“H” model

Forged Carbon Steel

Forged Nickel-Aluminum-Bronze

Pump Model	Flange Connections		Dimensions (Inches)							
	Discharge Connection Sizes	Suction Connection Sizes	A	B	C	D	E	F	G	H
350Q-5L	4 (101.6)-API 2000 RJ	8 (203.2)-ANSI 300 FF	6 1/2	9 1/2	45	52	53 7/8	77 3/4	12 1/2	5
350Q-5M	3 (76.12)-ANSI 1500 FF	6 (152.4)-ANSI 300 FF	6	8	45 1/2	51 1/2	53 1/2	76 1/8	12 5/8	2 1/4
350Q-5H	2 (50.8)-ANSI 2500 RF	4 (101.6)-ANSI 300 RF	10 3/8	0	52	49 3/4	52	80 3/4	15	7

350Q-5

Performance Data

Pump	English Units					100 RPM		150 RPM		200 RPM		300 RPM		350 RPM		360 RPM	
	Plunger Dia. In.	Plunger Area Sq. In.	BPD per RPM	GPM per RPM	Max. Press. PSI	BPD	GPM	BPD	GPM	BPD	GPM	BPD	GPM	BPD	GPM	BPD	GPM
350Q-5L (Q350-4)	4.000	12.5664	46.6284	1.3600	1102	4663	136.0	6995	204.0	9326	272.0	11658	340.0	13989	408.0	16787	489.6
	3.750	11.0447	40.9820	1.1953	1254	4099	119.5	6148	179.3	8197	239.1	10246	298.8	12295	358.6	14754	430.3
	3.625	10.3206	38.2954	1.1169	1342	3830	111.7	5745	167.5	7660	223.4	9574	279.2	11489	335.1	13787	402.1
	3.500	9.6211	35.6999	1.0412	1440	3570	104.1	5355	156.2	7140	208.2	8925	260.3	10710	312.4	12852	374.8
	3.375	8.9462	33.1954	0.9682	1548	3320	96.8	4980	145.2	6640	193.6	8299	242.1	9959	290.5	11951	348.6
	3.250	8.2958	30.7820	0.8978	1670	3079	89.8	4618	134.7	6157	179.6	7696	224.5	9235	269.3	11082	323.2
350Q-5M (Q350-3)	3.250	8.2958	30.7820	0.8978	1670	3079	89.8	4618	134.7	6157	179.6	7696	224.5	9235	269.3	11082	323.2
	3.000	7.0686	26.2285	0.7650	1959	2623	76.5	3935	114.7	5246	153.0	6558	191.2	78.69	229.5	9443	275.4
	2.750	5.9396	22.0392	0.6428	2332	2204	64.3	3306	96.4	4408	128.6	5510	160.7	6612	192.8	7935	231.4
	2.500	4.9087	18.2142	0.5312	2822	1822	53.1	2733	79.7	3643	106.2	4554	132.8	5465	159.4	6558	191.2
350Q-5H (Q350-2)	2.250	3.9761	14.7535	0.4303	3483	1476	43.0	2214	64.5	2951	86.1	3689	107.6	4427	129.1	5312	154.9
	2.250	3.9761	14.7535	0.4303	3483	1476	43.0	2214	64.5	2951	86.1	3689	107.6	4427	129.1	5312	154.9
	2.000	3.1416	11.6571	0.3400	4409	1166	34.0	1749	51.0	2332	68.0	2915	85.0	3498	102.0	4197	122.4
	1.750	2.4053	8.9250	0.2603	5758	893	26.0	1339	39.0	1785	52.1	2232	65.1	2678	78.1	3213	93.7
Brake Horsepower Required"						98		146		195		243		292		350	

Pump	Metric Units					100 RPM		150 RPM		200 RPM		300 RPM		350 RPM		360 RPM	
	Plunger Dia. mm	Plunger Area cm ²	M ³ /Hr per RPM	L/Sec. per RPM	Max. Press. kPa	M ³ /Hr	L/Sec.	M ³ /Hr	L/Sec.	M ³ /Hr	L/Sec.	M ³ /Hr	L/Sec.	M ³ /Hr	L/Sec.	M ³ /Hr	L/Sec.
350Q-5L (Q350-4)	102	81.073	0.309	0.086	7599	30.9	8.6	46.3	12.9	61.8	17.2	77.2	21.5	92.7	25.7	111.2	30.9
	95	71.256	0.272	0.075	8646	27.1	7.5	40.7	11.3	54.3	15.1	67.9	18.9	81.4	22.6	97.7	27.1
	92	66.584	0.254	0.071	9253	25.4	7.0	38.0	10.6	50.7	14.1	63.4	17.6	76.1	21.1	91.3	25.4
	89	62.072	0.237	0.066	9925	23.6	6.6	35.5	9.9	47.3	13.1	59.1	16.4	70.9	19.7	85.1	23.6
	86	57.717	0.220	0.061	10674	22.0	6.1	33.0	9.2	44.0	12.2	55.0	15.3	66.0	18.3	79.2	22.0
	83	53.521	0.204	0.057	11511	20.4	5.7	30.6	8.5	40.8	11.3	51.0	14.2	61.2	17.0	73.4	20.4
350Q-5M (Q350-3)	83	53.521	0.204	0.057	11511	20.4	5.7	30.6	8.5	40.8	11.3	51.0	14.2	61.2	17.0	73.4	20.4
	76	45.604	0.174	0.048	13510	17.4	4.8	26.1	7.2	34.7	9.7	43.4	12.1	52.1	14.5	62.5	17.4
	70	38.320	0.146	0.041	16077	14.6	4.1	21.9	6.1	29.2	8.1	36.5	10.1	43.8	12.2	52.6	14.6
	64	31.669	0.121	0.034	19454	12.1	3.4	18.1	5.0	24.1	6.7	30.2	8.4	36.2	10.1	43.4	12.1
350Q-5H (Q350-2)	57	25.652	0.098	0.027	24017	9.8	2.7	14.7	4.1	19.5	5.4	24.4	6.8	29.3	8.1	35.2	9.8
	57	25.652	0.098	0.027	24017	9.8	2.7	14.7	4.1	19.5	5.4	24.4	6.8	29.3	8.1	35.2	9.8
	51	20.268	0.077	0.022	30396	7.7	2.1	11.6	3.2	15.4	4.3	19.3	5.4	23.2	6.4	27.8	7.7
	44	15.518	0.059	0.016	39701	5.9	1.6	8.9	2.5	11.8	3.3	14.8	4.1	17.7	4.9	21.3	5.9
Kilowatts Required						73		109		145		181		217		261	

For operation below 100 RPM, an auxiliary lubrication system is required.

Volumetric Rate is based on 100% Volumetric Efficiency. Brake Horsepower/Kilowatts Required is based on 90% Mechanical Efficiency.

The information and data on this sheet is accurate to the best of our knowledge and belief, but are intended for general information only. Applications suggested for the materials are described only to help readers make their own evaluations and decisions, and are neither guarantees nor to be construed as express or implied warranties of suitability for these or other applications. NOV Inc. makes no warranty either express or implied beyond that stipulated in NOV Inc. Standard Terms and Conditions of Sale.