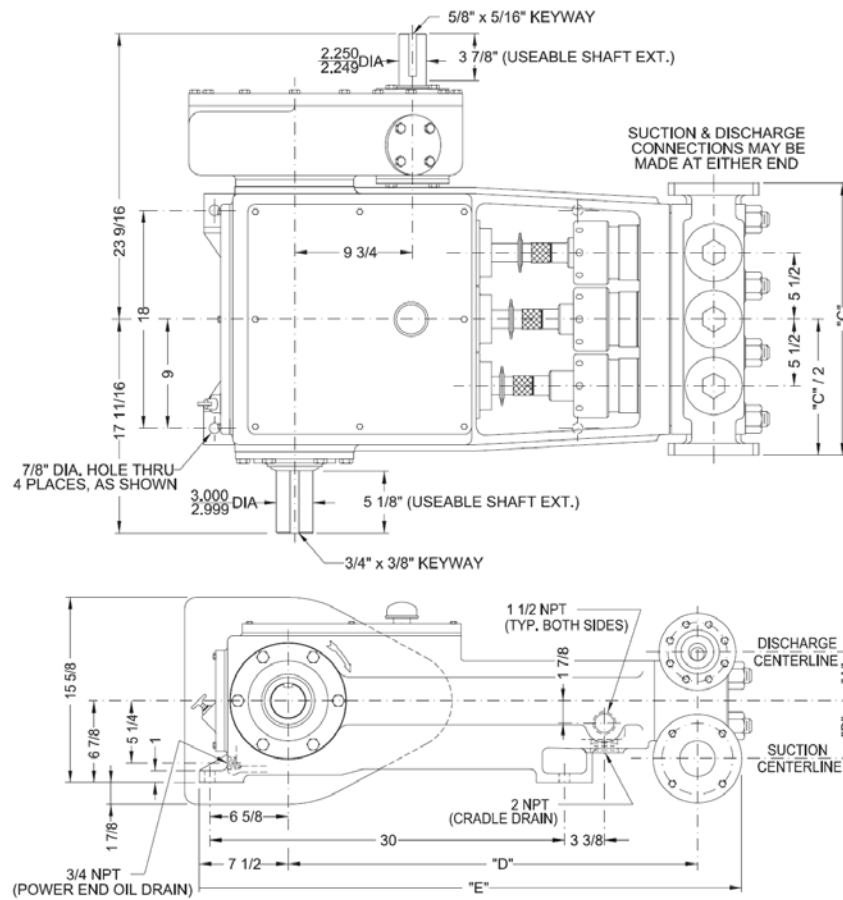


# 80T-3 Triplex Plunger Pump



## Pump size in.(mm)

(maximum plunger size x stroke length:  
3 3/8 x 3 (85.7 x 76.2)

## Rated

bhp at 500 rpm (kw): 80 (59.65)

## Rated plunger load pounds (Kg)

6336 (2874)

## Max discharge pressure psi(kPa)

"L" model: 2017 (13,907)

"M" model: 4267 (29,420)

"H" model: 5161 (35,584)

## Crankshaft extension in.(mm)

Diameter: 3 (76.2)

Length long side: 5 1/8 (130.2)

Length short side: 5 1/8 (130.2)

Keyway (width x depth): 3/4 x 3/8 (19.1 x 9.5)

Maximum recommended sheave: 37.5 (952.5)

Minimum recommended sheave: 20 (508)

## Pinion shaft extension in.(mm)

If gear reducer is supplied:

For belt or chain drive: **Contact Factory**

For direct drive: diameter: 2 1/4 (57.2)

Length: 3 7/8 (98.4)

Keyway (width x depth): 5/8 x 5/16 (15.9 x 7.9)

## Accessory gear reduction unit ratios

2.34:1, 2.77:1, 3.03:1, 3.5:1

## Oil capacity gallons (L)

Crankcase: 2 (7.6)

Gear Reducer: 1 (3.8)

## Weight pounds (Kg)

pump only on:

wood shipping skids: 1195 (542.0)

Gear reducer, approximate: 315 (142.88)

Pump Model	Flange connections		Dimensions in inches				
	Discharge connection sizes	Suction connection sizes	A	B	C	D	E
80T-3L(Flanged)	2 (50.8) API-2000 RJ	3 (76.2) ANSI-150 FF	4 1/8	4 7/8	22 1/2	34 5/8	45 7/8
80T-3M	1 1/2 (38.1) API-5000 RJ	2 1/2 (63.5) ANSI-150 FF	4	4 1/2	22 1/4	34 5/8	44 3/4
80T-3H	1 1/4 (31.8) ANSI-2500 RJ	2 1/2 (63.5) ANSI-300 FF	4	4 1/2	22 5/8	34 5/8	45 7/8

## 80T-3 Triplex Plunger Pump

### Performance Data

Pump	English Units					200 RPM		300 RPM		350 RPM		400 RPM		450 RPM		500 RPM	
	Plunger Dia. In.	Plunger Area Sq. in.	BPD per RPM	GPM per RPM	Max Press. PSI	BPD	GPM	BPD	GPM	BPD	GPM	BPD	GPM	BPD	GPM	BPD	GPM
80T-3L	3.250	8.2958	11.0815	0.3232	764	2217	64.6	3325	97.0	3879	113.1	4433	129.3	4987	145.4	5541	161.6
	3.000	7.0686	9.4423	0.2754	896	1889	55.1	2833	82.6	3305	96.4	3777	110.2	4250	123.9	4722	137.7
	2.750	5.9396	7.9341	0.2314	1067	1587	46.3	2381	69.4	2777	81.0	3174	92.6	3571	104.1	3968	115.7
	2.500	4.9087	6.5571	0.1912	1290	1312	38.2	1968	57.4	2295	66.9	2623	76.5	2951	86.1	3279	95.6
	2.250	3.9761	5.3113	0.1549	1594	1063	31.0	1594	46.5	1859	54.2	2125	62.0	2391	69.7	2656	77.5
	2.000	3.1416	4.1966	0.1224	2017	840	24.5	1259	36.7	1469	42.8	1679	49.0	1889	55.1	2099	61.2
80T-3M	2.000	3.1416	4.1966	0.1224	2017	840	24.5	1259	36.7	1469	42.8	1679	49.0	1889	55.1	2099	61.2
	1.750	2.4053	3.2130	0.0937	2634	643	18.7	964	28.1	1125	32.8	1286	37.5	1446	42.2	1607	46.9
	1.500	1.7671	2.3606	0.0688	3584	473	13.8	709	20.7	827	24.1	945	27.5	1063	31.0	1181	34.4
80T-3H	1.250	1.2272	1.6393	0.0478	5161	328	9.6	492	14.3	574	16.7	656	19.1	738	21.5	820	23.9
Brake horsepower required						32		48		56		64		72		80	

Pump	Metric Units					200 RPM		300 RPM		350 RPM		400 RPM		450 RPM		500 RPM	
	Plunger Dia. mm.	Plunger Area cm <sup>2</sup>	M <sup>3</sup> /Hr per RPM	L/sec. per RPM	Max Press kPa	M <sup>3</sup> /Hr	L/sec.	M <sup>3</sup> /Hr	L/sec.	M <sup>3</sup> /Hr	L/sec.	M <sup>3</sup> /Hr	L/sec.	M <sup>3</sup> /Hr	L/sec.	M <sup>3</sup> /Hr	L/sec.
80T-3L	83	53.521	0.0734	0.0204	5266	14.68	4.08	22.02	6.12	25.69	7.14	29.36	8.16	33.03	9.18	36.70	10.20
	76	45.604	0.0625	0.0174	6180	12.51	3.47	18.76	5.21	21.89	6.08	25.02	6.95	28.14	7.82	31.27	8.69
	70	38.320	0.0526	0.0146	7355	10.51	2.92	15.77	4.38	18.39	5.11	21.02	5.84	23.65	6.57	26.28	7.30
	64	31.669	0.0434	0.0121	8894	8.69	2.41	13.03	3.62	15.20	4.22	17.37	4.83	19.54	5.43	21.72	6.03
	57	25.652	0.0352	0.0098	10987	7.04	1.95	10.55	2.93	12.31	3.42	14.07	3.91	15.83	4.40	17.59	4.89
	51	20.268	0.0278	0.0077	13906	5.56	1.54	8.34	2.32	9.73	2.70	11.12	3.09	12.51	3.47	13.90	3.86
80T-3M	51	20.268	0.0278	0.0077	13906	5.56	1.54	8.34	2.32	9.73	2.70	11.12	3.09	12.51	3.47	13.90	3.86
	44	15.518	0.0213	0.0059	18162	4.26	1.18	6.38	1.77	7.45	2.07	8.51	2.36	9.58	2.66	10.64	2.96
	38	11.401	0.0156	0.0043	24711	3.13	0.87	4.69	1.30	5.47	1.52	6.25	1.74	7.04	1.95	7.82	2.17
80T-3H	32	7.917	0.0109	0.0030	35584	2.17	0.60	3.26	0.90	3.80	1.06	4.34	1.21	4.89	1.36	5.43	1.51
Kilowatts required						23.9		35.8		41.8		47.7		54.0		60.0	

Volumetric Rate is based on 100% volumetric efficiency. Brake Horsepower/Kilowatts required is based on 90% mechanical efficiency. For operation below 200 RPM, auxiliary lubrication system required. Not all plunger sizes are shown. Contact NOV for additional information. 3-3/8 & 3-1/4" Plungers require spherical valves.

The information and data on this sheet is accurate to the best of our knowledge and belief, but are intended for general information only. Applications suggested for the materials are described only to help readers make their own evaluations and decisions, and are neither guarantees nor to be construed as express or implied warranties of suitability for these or other applications. NOV Inc. makes no warranty either express or implied beyond that stipulated in NOV Inc. Standard Terms and Conditions of Sale.