

# Seawater Treatment References

## Ceiba, Equatorial Guinea



**Customer/End User:** Petrobras/Triton Energy  
**Solution:** 135,000 BPD skid-based solution consisting of cartridge filters, and SRU.

**Delivered:** 2001

## P50, Brazil



**Customer/End User:** QGI/Petrobras  
**Solution:** 220,000 BPD Module consisting of coarse filters, cartridge filters, SRU, and deaerator (loose).

**Delivered:** 2006

## MV14, Brazil



**Customer/End User:** Modec/Petrobras  
**Solution:** 120,000 BPD module consisting of coarse filters, cartridge filters, SRU, and deaerator. Project was delivered in 38 weeks.

**Delivered:** 2006

## P54, Brazil



**Customer/End User:** Petrobras  
**Solution:** 220,000 BPD skid-based solution consisting of coarse filters, cartridge filters, SRU, deaerator (loose), and injection pumps.

**Delivered:** 2006



# Seawater Treatment References

## MV18, Brazil



**Customer/End User:** Modec/Petrobras  
**Solution:** 138,000 BPD modules consisting of coarse filters, cartridge filters, SRU, and deaerator (loose)  
**Delivered:** 2008

## MV20, Brazil



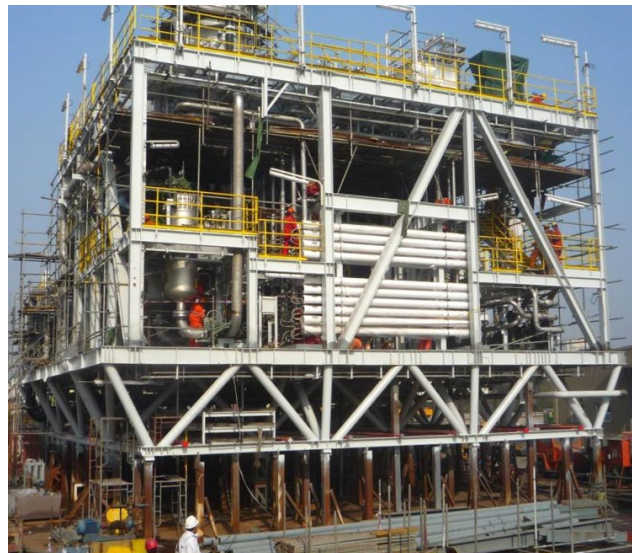
**Customer/End User:** Modec/Petrobras  
**Solution:** 31,400 BPD module consisting of coarse filters, multimedia and guard filters, deaerator, and SRU.  
**Delivered:** 2009

## MV21 Jubilee, Ghana



**Customer/End User:** Modec/Tullow Oil  
**Solution:** 232,000 BPD modules consisting of coarse filters, multimedia and guard filters, deaerator, and SRU. NOV provided lifecycle services including digitalization with NOV PIM.  
**Delivered:** 2009

## MV22 Tupi, Brazil



**Customer/End User:** Modec/Petrobras  
**Solution:** 100,700 BPD module consisting of coarse filters, multimedia and guard filters, deaerator, and SRU.  
**Delivered:** 2009



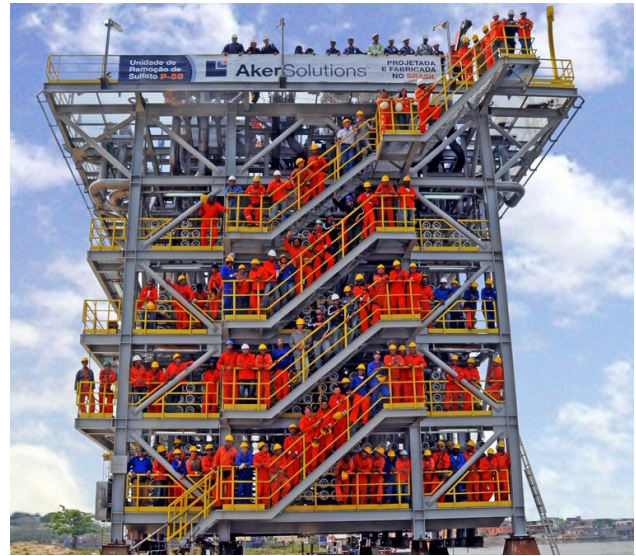
# Seawater Treatment References

## P62, Brazil



**Customer/End User:** Petrobras  
**Solution:** 270,000 BPD skid-based solution consisting of coarse filters, multimedia filters, deaerator, and SRU.  
**Delivered:** 2011

## P58, Brazil



**Customer/End User:** Petrobras  
**Solution:** 380,000 BPD skid-based solution consisting of coarse filters, cartridge filters, SRU, and deaerator (loose)  
**Delivered:** 2011

## OSX 3, Brazil



**Customer/End User:** Modec/OSX  
**Solution:** 165,000 BPD module consisting of coarse filters, multimedia and guard filters, deaerator, and SRU.  
**Delivered:** 2012

## MV24 Pilot 5, Brazil



**Customer/End User:** Modec/Petrobras  
**Solution:** 210,000 BPD solution consisting of coarse filters, multimedia and guard filters, deaerator, SRU, and CIP.  
**Delivered:** 2013



# Seawater Treatment References

## Moho Nord, Congo



**Customer/End User:** HHI/Total  
**Solution:** 124,730 BPD Module consisting of SRU, CIP, coarse strainers, and deaerator.

**Delivered:** 2016

## Kraken, UK



**Customer/End User:** BAB/Enquest  
**Solution:** 80,000 BPD skid based coarse filters, UF, SRU, deaerator, and chemical dosing. Operating since 2017 with NOV healthcare support.

**Delivered:** 2016

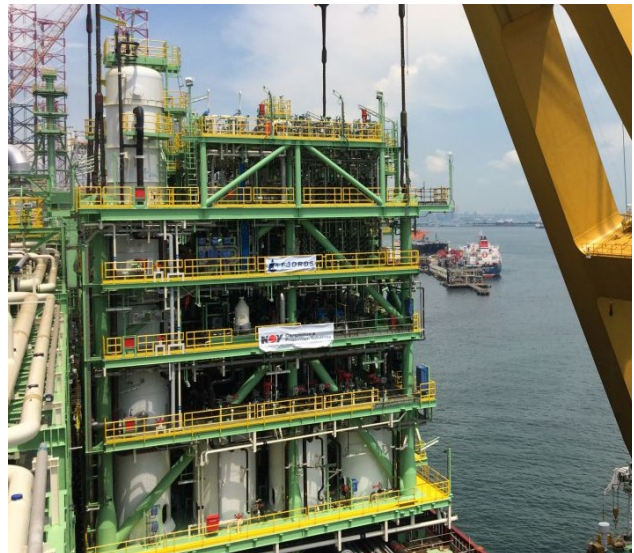
## P75, Brazil



**Customer/End User:** QGI/ Petrobras  
**Solution:** 220,000 BPD module consisting of coarse filters, cartridge filters, SRU, and deaerator (loose).

**Delivered:** 2018

## Catcher, UK



**Customer/End User:** BWO/Premier Oil  
**Solution:** 500 m<sup>3</sup>/h SW, 828 m<sup>3</sup>/h PW. 1758t module (33m x 24m x 24m) consisting of produced water treatment and seawater treatment, combined.

**Delivered:** 2018



# Seawater Treatment References

## P77, Brazil



**Customer/End User:** QGI/Petrobras  
**Solution:** 220,000 BPD Module consisting of coarse filters, cartridge filters, SRU, and deaerator (loose).  
**Delivered:** 2018

## Paraiso, Mexico



**Customer/End User:** Grupo Avanzia/Hockhi  
**Solution:** 300 m<sup>3</sup>/h SW + 300 m<sup>3</sup>/h PW. Coarse filters, multimedia filters, deaerator, and SRU.  
**Delivered:** 2021

## Buzios, Brazil



**Customer/End User:** SBM/Petrobras  
**Solution:** 276,800 BPD module consisting of coarse filters, UF, SRU feed pumps, SRU, RO booster pump, SWRO, CIP, chemical dosing skid, deaerator, and SW booster pumps.  
**Delivered:** 2022