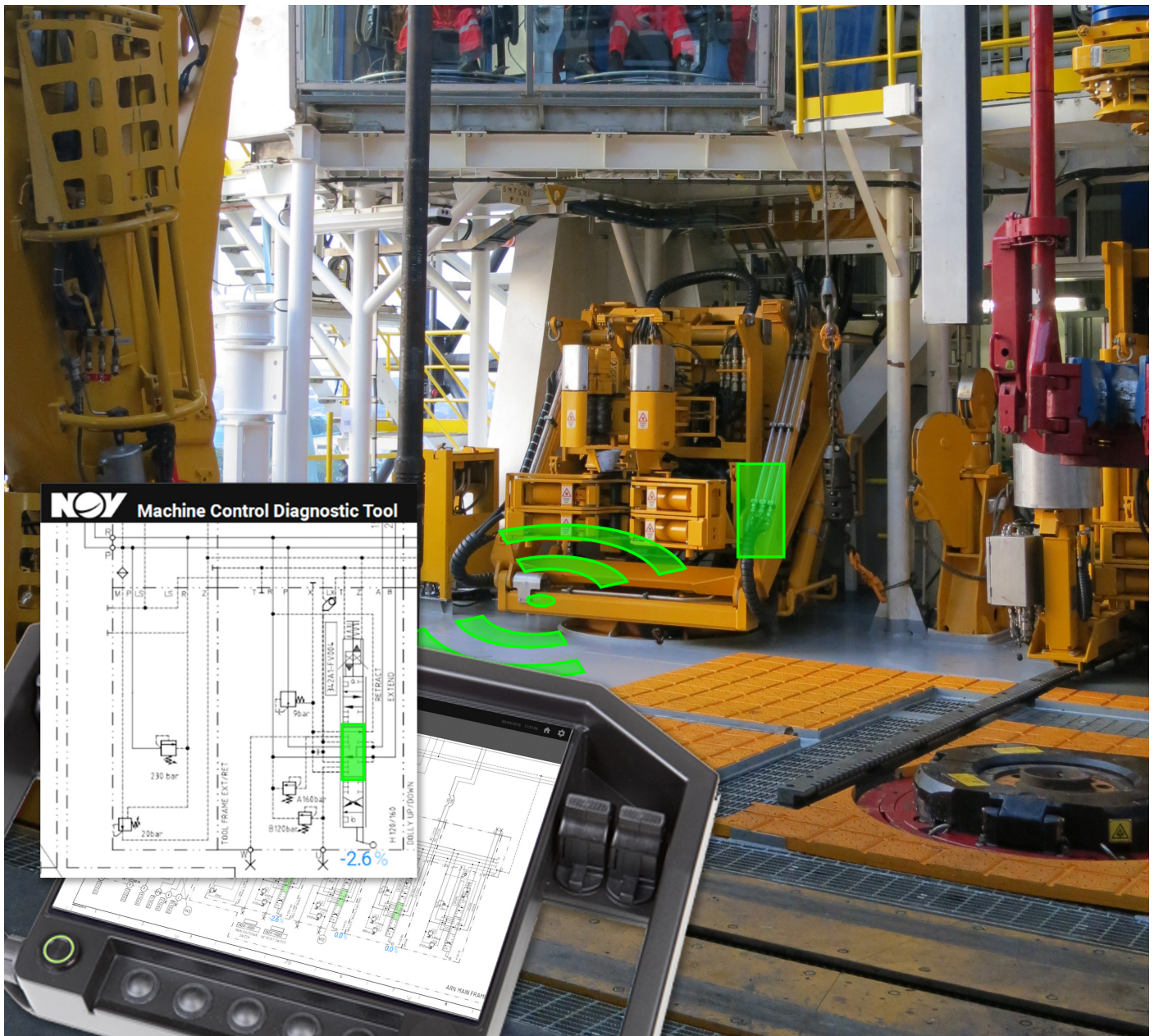


Machine Control Diagnostic Tool (MCDT)

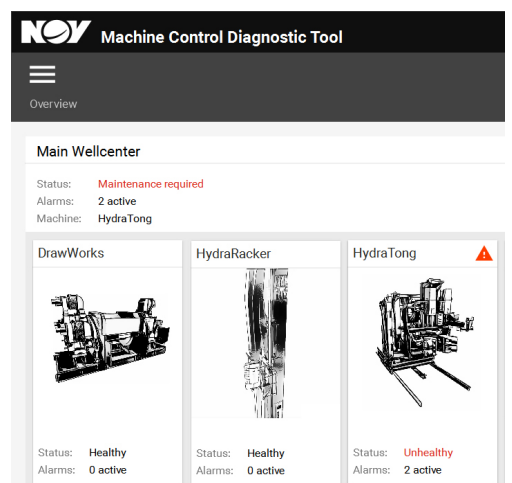


A faster way to find and fix machine errors

Machine Control Diagnostic Tool (MCDT) is designed for rig electro-technicians and hydraulic engineers. It allows you to reduce the amount of time spent troubleshooting and searching for the cause of an error by establishing a communication link between your equipment and the corresponding drawings and part numbers.

With diagnostics that are compatible with drilling, pipe handling, and hoisting equipment, MCDT helps you to:

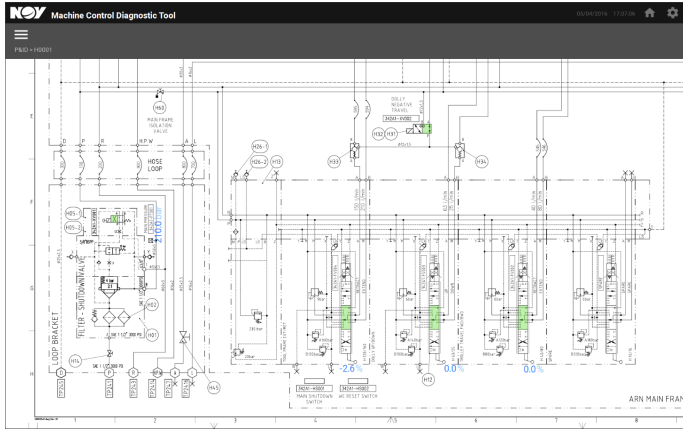
- Quickly identify affected components and locate the relevant engineering drawings
- Identify corresponding spare parts and part numbers
- Reduce the amount of time needed to calibrate and test equipment
- Troubleshoot equipment without interrupting normal operations by using the dedicated MCDT operator panel



Machine Control Diagnostic Tool (MCDT)

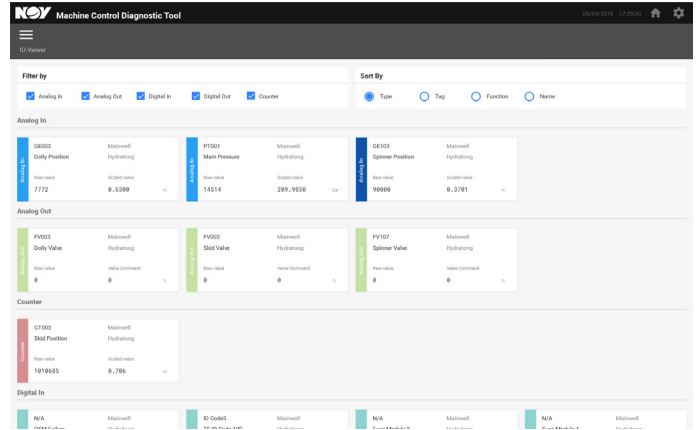
Interactive P&ID

Electric and hydraulic P&ID drawings with real-time data such as pressure, position, and valve status.



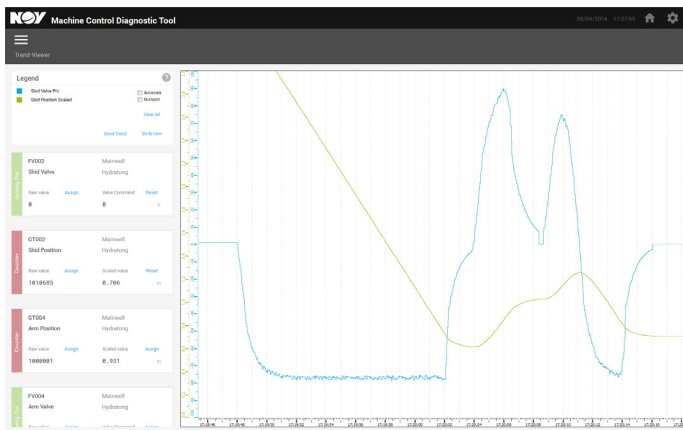
I/O Viewer

Enables the technician to view and monitor real-time input and output values.



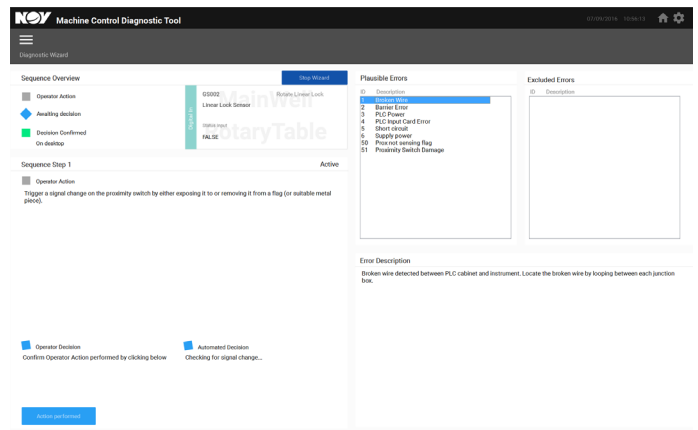
Trend Viewer

Logger/trend viewer with predefined signals for selected functions.



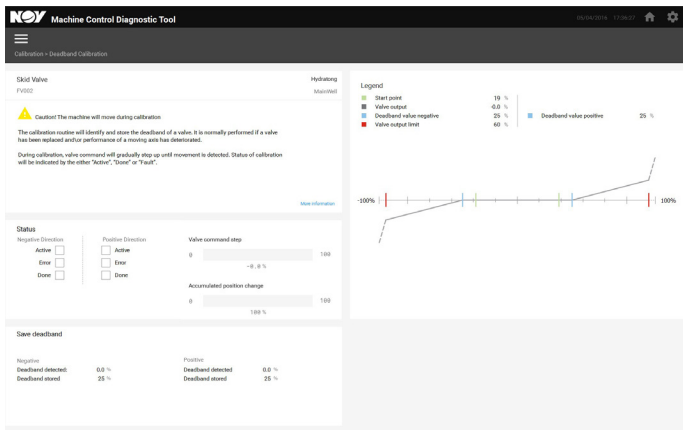
Diagnostic Wizard

Assists the technician in identifying the root cause of an error.



Remote with Calibration

Optional feature for machine calibration and secondary platform for machine diagnostics without interfering with control stations.



Component Viewer

Optional viewer feature to highlight components on an interactive 3D equipment model.

