



# Tuboscope™ Custom Coating

Tuboscope's proprietary line of Tube Kote (TK™) Coatings set the industry standard for preventing corrosion, wear, deposit mitigation and improving hydraulic efficiency. The complete line of TK™-Coatings are designed to meet all operating conditions, such as downhole temperatures up to 400°F (204°C), high H<sub>2</sub>S concentrations and high CO<sub>2</sub> levels.

TK-Coatings are applied worldwide at our custom coating facilities for all commonly used oilfield tubular (OCTG) accessories.

Custom accessories should be coated when used in conjunction with internally coated tubulars to help ensure maximum performance by providing a continuous barrier.

---

#### Custom Coating Capabilities Include

- Pup Joints
- Mandrels
- Thru-Kote™ sleeves
- T's and L's
- Manifolds
- Flanges
- Spools
- Couplings
- Other custom coating variations

External coatings are available on a turnkey basis

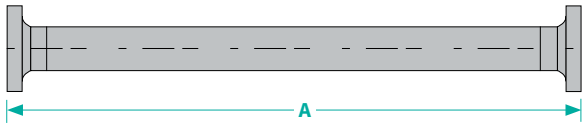
---

A complete corrosion control program is essential to the safety and success of your drilling, production and pipeline applications.

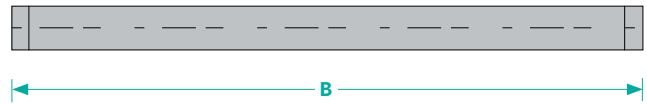


## Tuboscope™ — Custom Coating

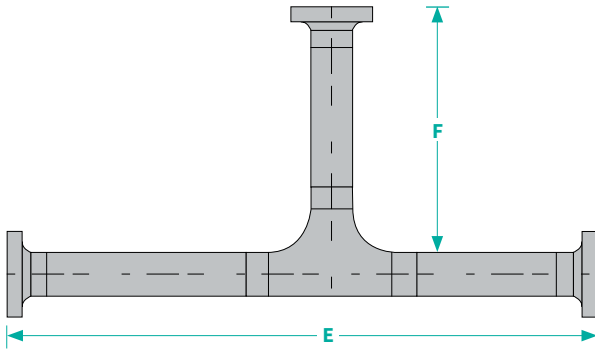
Any spool variations required beyond the images below may be configured with the use of the Thru-Kote Sleeve.



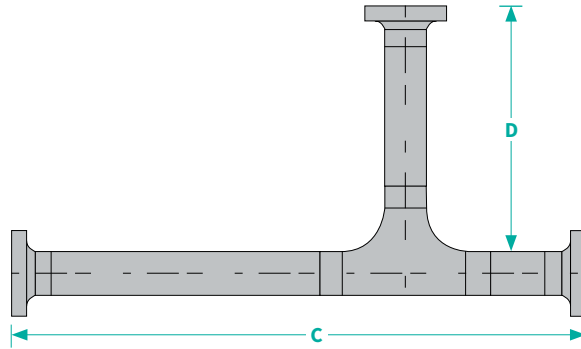
Straight Spool with Flange



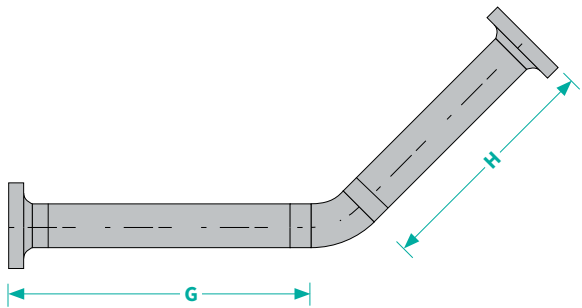
Straight Spool without Flange



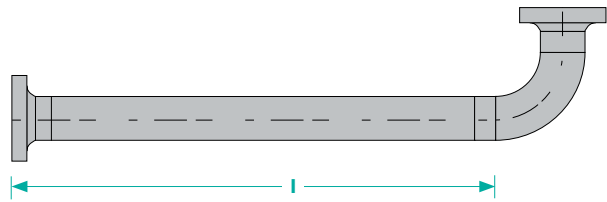
Equal or Un-Equal Tee



Spool with Branch Connection(s)



45° or 90° Degree Bend



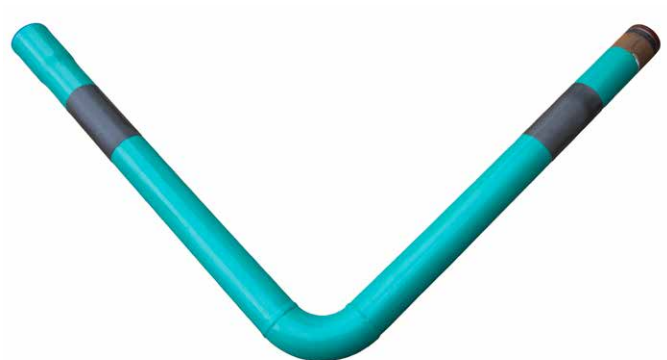
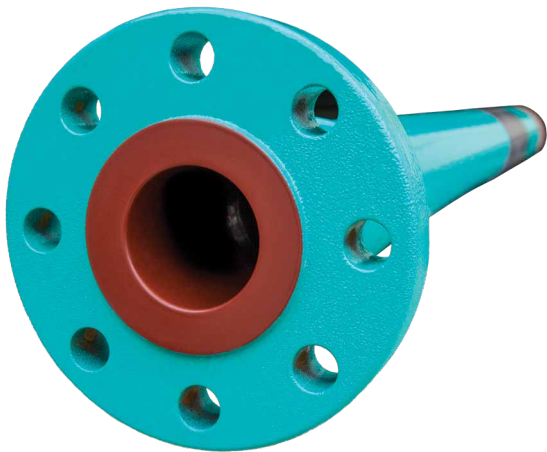
Spool with Bend

Maximum Dimensions for All Accessories 20 ft x 8 ft

By the foot – Based off above images

A – Straight runs with flanges / Zap-Lok™ Connections: 15'

B – Straight runs plain end bevel x plain end bevel: 20'



All other custom coating variations will be quoted on a per drawing basis. Please contact your Tuboscope sales rep for an official quote with any available drawings or sketches.